



CITY OF  
WOLVERHAMPTON  
COUNCIL

**CITY OF WOLVERHAMPTON**

**OPEN SPACE STRATEGY AND ACTION PLAN**

**FEBRUARY 2014**

**AS UPDATED JANUARY 2016**

**Integrity, Innovation, Inspiration**

1-2 Frecheville Court ◀ off Knowsley Street ◀ Bury BL9 0UF  
**T** 0161 764 7040 ◀ **F** 0161 764 7490 ◀ **E** mail@kcp.co.uk ◀ **www.kcp.co.uk**



6543  
026

# CITY OF WOLVERHAMPTON COUNCIL

## OPEN SPACE STRATEGY AND ACTION PLAN UPDATE

---

---

|   |    |
|---|----|
| 1. INTRODUCTION.....                                      | 3  |
| 2. CONTEXT .....  | 4  |
| National .....  | 4  |
| Sub-Regional.....   | 5  |
| Local.....  | 5  |
| 3. OPEN SPACE STANDARDS .....                             | 9  |
| Quantity standards.....                                   | 9  |
| Quality standards.....                                    | 11 |
| Access standards .....                                    | 15 |
| 4. SUMMARY .....  | 23 |
| 5. VISION .....   | 27 |
| Aims .....  | 27 |
| Objectives.....   | 28 |
| Typology specific aims and objectives .....               | 30 |
| 6. DELIVERY .....   | 33 |
| Resources .....   | 33 |
| Nature Improvement Area.....                              | 34 |
| Community and partnership working.....                    | 34 |
| 7. MONITORING FRAMEWORK.....                              | 37 |
| 8. OPEN SPACE ACTION PLAN .....                           | 38 |
| Introduction.....   | 38 |
| Determining Priority Actions.....                         | 38 |
| 9. ACTION PLAN BY AREA AND TYPOLOGY .....                 | 39 |
| Bilston.....  | 41 |
| Central and South.....                                    | 46 |
| North.....  | 51 |
| Tettenhall.....   | 54 |
| Wednesfield.....  | 58 |
| APPENDIX ONE: QUALITY AND VALUE SCORING METHODOLOGY ..... | 62 |
| APPENDIX TWO: OPEN SPACE STANDARDS REVIEW PAPER .....     | 69 |

# CITY OF WOLVERHAMPTON COUNCIL

## OPEN SPACE STRATEGY AND ACTION PLAN UPDATE

---

### 1. INTRODUCTION

This Strategy and Action Plan sets out a strategic vision and a series of aims and objectives for open space in Wolverhampton of all types and ownerships. Based on these objectives and an assessment against quantity, quality and access standards a prioritised action plan is provided for different parts of the City for each type of open space. Over-arching actions for the whole City are also identified.

The document builds upon the work undertaken by Wolverhampton City Council (WCC) as part of the Open Space Audit and Needs Assessment (OSANA) in 2008 and the findings of the review, carried out by Knight, Kavanagh and Page (KKP) in 2012, on the recommended OSANA standards. A summary of both is provided in section two.

The document also draws on key actions identified in the Wolverhampton Playing Pitch Strategy and Action Plan 2015 and the Wolverhampton Sport Development and Investment Strategy 2012, and highlights where there is cross-over between actions affecting different types of open space and sports facilities.

The Strategy and Action Plan sets out a vision up to 2026, providing a strategic framework for the development and improvement of existing open space facilities. It aims to:

- ◀ Provide a clear prioritised action plan to protect and improve existing open spaces and to increase the provision of such facilities, where it is shown there are deficiencies against quantity, quality and access standards. This includes area-based action plans with implementation and funding sources.
- ◀ Advise, as appropriate, on opportunities for rationalisation and change of use of current open space provision within the City.
- ◀ Detail how WCC can encourage greater community involvement and ownership in the management, maintenance and development of open spaces.
- ◀ Recommend how to maximise the effective use of physical and financial resources in improving the quantity, quality and accessibility of open space
- ◀ Advise on best practise in terms of delivery including stakeholder and partnership working, marketing and communication improvements.
- ◀ Establish a robust monitoring framework to assess the effectiveness of the Strategy and Action Plan.
- ◀ Provide the basis for reviewing the existing draft Open Space, Sport and Recreation SPD (this review has now been completed and the SPD adopted).

An action plan has been developed which identifies areas for prioritisation, together with level of priority and recommended action. It is important to remember that the action plan is a working document and the priority actions highlighted will be monitored and updated every year and the action plan as a whole reviewed at an appropriate time or a minimum of every five years, in order to take account of any significant changes, for example, following any adjustment to housing allocations.

# CITY OF WOLVERHAMPTON COUNCIL

## OPEN SPACE STRATEGY AND ACTION PLAN UPDATE

---

### 2. CONTEXT

The following section summarises the key strategic documents relevant to this Strategy and link, where appropriate, to the aims and objectives set out later.

#### **National**

##### ***National Planning Policy Framework***

The National Planning Policy Framework (NPPF) sets out the reformed planning policies for England. It details how these changes are expected to be applied to the planning system. It also provides a framework for local people and their councils to produce distinct local and neighbourhood plans, reflecting the needs and priorities of local communities.

The NPPF states the purpose of the planning system is to contribute to the achievement of sustainable development. It establishes the planning system needs to focus on three themes of sustainable development: economic, social and environmental. A presumption in favour of sustainable development is a key aspect for any plan-making and decision-taking processes. In relation to plan-making the NPPF sets out that Local Plans should meet objectively assessed needs.

Under the promoting healthy communities theme, it is set out that planning policies should be based on robust and up-to-date assessments of the needs for open space, sport and recreation facilities and opportunities for new provision. Specific needs and quantitative and qualitative deficiencies and surpluses in local areas should also be identified. This information should be used to inform what provision is required in an area.

As a prerequisite the NPPF states existing open space, sport and recreation sites, including playing fields, should not be built on unless:

- ◀ An assessment has been undertaken, which has clearly shown the site to be surplus to requirements.
- ◀ The loss resulting from the proposed development would be replaced by equivalent or better provision in terms of quantity and quality in a suitable location.
- ◀ The development is for alternative sport and recreational provision, the needs for which clearly outweigh the loss.

##### ***Localism Act 2011***

The government expects local authorities to empower their communities and maintain strong links with the voluntary and community groups. The current Localism Act 2011 includes new community Rights designed to enable local people to play a major part in shaping and helping to manage green spaces where they live.

This empowerment of local communities through schemes such as the creation of Neighbourhood Plan documents could be used as mechanism to deliver the actions set out within this plan. Opportunities such as these should be explored through working closely with community groups. If for example a specific area is deficient in a typology than a document such as the neighbourhood plan could look at ways of addressing this deficiency locally.

# CITY OF WOLVERHAMPTON COUNCIL

## OPEN SPACE STRATEGY AND ACTION PLAN UPDATE

---

### Sub-Regional

#### ***Black Country Core Strategy***

The Core Strategy sets out the policy direction for how the sub-region (covering Dudley, Sandwell, Walsall and Wolverhampton) should look in 2026. It is a spatial plan, addressing the economic, transportation, social infrastructure and environmental needs of the sub-region. The Core Strategy replaces the Unitary Development Plan (UDP) as part of the Local Development Framework (LDF).

There are 10 spatial objectives outlined in the Core Strategy. Spatial Objective Six details that by 2026 the Core Strategy would have helped to deliver *a high quality environment fit for the future, and a strong Urban Park focussed on beacons, corridors and communities: respecting, protecting and enhancing the unique biodiversity and geo-diversity of the Black Country and making the most of its assets whilst valuing its local character and industrial legacy.*

Policy ENV6 of the Core Strategy sets the spatial objectives for open space, sport and recreation across the Black Country. The policy advocates the need to apply the principles of national policy in order to support urban renaissance and environmental transformation and to deliver Spatial Objective Six. In addition to national policy and guidance the policy also states the need to recognise the following roles of open space as being of importance:

- ◀ Improving the image and environmental quality of the Black Country;
- ◀ Defining and enhancing local distinctiveness;
- ◀ Reducing potential urban heat island effects;
- ◀ Preserving and enhancing diversity in the natural and built environment;
- ◀ Preserving and enhancing industrial, archaeological and architectural heritage, including canals;
- ◀ Providing components of a high quality, multifunctional green space network or 'Urban Park';
- ◀ Enhancing people's mental and physical well-being;
- ◀ Strengthening (through extension, increased access and enhanced value) the existing greenway network.

### Local

#### ***Wolverhampton City Strategy (2011-2016)***

The Strategy has been developed by City partners working together through the Wolverhampton Partnership – the City's Local Strategic Partnership. The City Strategy aims to provide a city where people benefit from good health and live longer and also a city of safe, strong and popular neighbourhoods where people have a sense of place and are proud to say they live in Wolverhampton. The vision of the strategy is to achieve *prosperity for all*.

The goal of *prosperity for all* will be achieved through the themes and subsequent actions set out by the Wolverhampton Partnership. The three core themes are:

- ◀ Encouraging enterprise and business
- ◀ Empowering people and communities
- ◀ Re-invigorating our city

# CITY OF WOLVERHAMPTON COUNCIL

## OPEN SPACE STRATEGY AND ACTION PLAN UPDATE

---

### ***Wolverhampton Unitary Development Plan***

The 2004 Planning and Compulsory Purchase Act requires the council to replace the UDP with new Development Plan Documents (DPD's) which form part of the Council's emerging Local Plan .

However, parts of the Wolverhampton UDP remain in force. Section 12 is the most pertinent to this study, covering the topic of open space, sport and recreation.

### ***Open Space, Sport and Recreation Supplementary Planning Document (SPD)***

The Open Space SPD is currently in draft form and will be adopted in 2014 subject to public consultation. The SPD sets out and adopts the quantity, quality and access standards for different types of open space, for planning purposes. It also clarifies how developer contributions will be sought for open space, in accordance with the Community Infrastructure Levy Regulations (2010).

### ***Area Action Plans and Neighbourhood Plans***

Area Action Plans' (AAP) are Local Development Documents which focus on a specific location or area subject to significant change (i.e. major regeneration or growth). An AAP focuses on the implementation of a development in terms of its scale, mix and key areas of opportunity, change and conservation.

There are three AAPs covering Wolverhampton; City Centre, Stafford Road Corridor and Bilston Corridor (for which a Neighbourhood Plan approach was taken). Each provides a framework to deliver the planned growth for their respective area. There are also two Neighbourhood Plans, for Tettenhall and Heathfield Park.

The Tettenhall Neighbourhood Plan Group, Bilston Neighbourhood Plan Group and other relevant groups have been, and will continue to be, involved in the monitoring and review of the Open Space Strategy and Action Plan, ensuring that the priority actions, in particular, reflect local needs and aspirations.

### ***Open Space Audit and Needs Assessment (2008)***

Wolverhampton City Council (WCC) undertook an Open Space Audit and Needs Assessment (OSANA) in 2007-8 as part of a Planning Policy Guidance 17 (PPG17) assessment of open spaces, sport and recreation facilities in the City. The OSANA provides an audit of all recreational open space within the City by type of use, and for each of five analysis areas. A range of community consultation methods was used to establish the satisfaction of residents with the current amount, location and quality of each type of open space, in each analysis area.

Based on this evidence the OSANA sets quantity (ha per 1,000 residents), access (mins walking distance) and quality standards for each type of open space for the City as a whole. These standards were then applied to each analysis area to identify gaps in provision over a 15 year period, taking into account new developments and population projections. The report then makes recommendations to improve the quality, quantity and accessibility of all types of recreational open space for the future, including a number of specific actions.

# CITY OF WOLVERHAMPTON COUNCIL

## OPEN SPACE STRATEGY AND ACTION PLAN UPDATE

---

### ***Open Space Audit and Needs Assessment Standards Review (2012)***

To inform the development of a new Open Space Strategy and Action Plan, there was a need to review and update the 2008 OSANA quantity and access standards, and to objectively assess the quality and value of key open spaces across the City to inform investment decisions.

The standards review involved the following work to ensure the standards used in the new Strategy, and applied for Planning purposes, were up to date, appropriate and robust:

- ◀ Applying site size thresholds to the typologies of amenity green space and natural green space.
- ◀ Where appropriate merging GIS polygons of adjacent sites of the same typology.
- ◀ Implementing a set size standard for certain sub-categories of play sites.
- ◀ Presenting one city-wide standard for each typology.

The new quantity standards were generally lower or remained the same as the 2008 OSANA standards for all typologies, with the exception of parks, which increased due to reclassification of some sites previously in amenity green space and outdoor sports facility typologies.

The review recommended that the 2008 OSANA access standards should remain unchanged, because the evidence to support these standards was (in the main) derived from the findings of the local needs assessment.

The recommended quantity and access standards for different types of open space, to be used for the purposes of this Strategy, are set out and applied in Section Three.

An assessment of quality and value was also undertaken as part of the review. The methodology used to score quality and value is set out in Appendix One. The quality and value scores have been used to identify which sites should be given the highest level of protection, those which are suitable for improvement and those which may be surplus to requirements as open space.

### **Playing Pitch Strategy and Action Plan / Sport Development and Investment Strategy**

A Playing Pitch Assessment was carried out in 2015, following the recommended Sport England methodology, covering:

- ◀ An audit of existing provision of different types of outdoor facilities detailing quantity, quality, accessibility and wider value to the community.
- ◀ An assessment of supply/demand for outdoor sports facilities.
- ◀ Analysis of the quantity and quality of other outdoor sports facilities in the City.

Based on the Assessment, a Playing Pitch Strategy and Action Plan was developed, which included a breakdown of key actions by Analysis Area and by sport. The key playing pitch issues arising from the Strategy have fed into the update of this OSSAP in January 2016.

# CITY OF WOLVERHAMPTON COUNCIL

## OPEN SPACE STRATEGY AND ACTION PLAN UPDATE

---

### **Action Planning Methodology**

Following the standards review work, the 2008 OSANA recommendations have been reviewed, updated and refined to produce a prioritised and deliverable action plan, including key actions from the Playing Pitch Strategy and Action Plan. The quantity and access standards and the quality/value work have been applied in combination to identify key actions, and to prioritise those actions. The action plan in Section nine is designed to address the identified deficiencies from application of the three standards (Quantity, Quality and Accessibility). A summary of the identified deficiencies are set out in Section four.



# CITY OF WOLVERHAMPTON COUNCIL

## OPEN SPACE STRATEGY AND ACTION PLAN UPDATE

### 3. OPEN SPACE STANDARDS

This section provides details of the revised quantity, quality and access standards, and applies these standards by analysis area. It begins to identify deficiencies and issues which need to be addressed through the action plan. Section four summarises the findings from the application of the standards for each analysis area.

#### Quantity standards

The quantity standards provide a guide as to the amount (in hectares) of different types of open space per 1,000 people required across the City to meet local needs. The standards can then be used to identify whether each analysis area is above or below the level of provision required, based on current and future projected populations.

A quantity standard is set for each type of open space with the exception of green corridors and cemeteries, in line with Government guidance. As each area of open space has been allocated only one type, the standards do not overlap. However, at a local level some types of open space should be viewed together as they may perform a similar function. For example, an area may be below standard for amenity green space, but be above standard for Parks, which will function as amenity green space for local residents.

*Table 3.1: Quantity standards*

| Typology                   | Quantity standard (ha per 1,000 population)                                      |
|----------------------------|--|
| Parks                      | 0.99   |
| Natural green space        | 1.33   |
| Provision for children     | 0.026  |
| Provision for young people | 0.018  |
| Amenity green space        | 0.56   |
| Allotments                 | 0.15   |
| Civic spaces               | 0.005  |
| Outdoor sports facilities  | 1.35<br>0.74 of which should be pitches available for community use <sup>1</sup> |
| <b>Total</b>               | <b>4.43</b>  |

The standards have been applied to each analysis area on the basis of ONS population estimates. Table 3.2 sets out surpluses (green) and deficiencies (red) of provision against the standards.

<sup>1</sup> From *Playing Pitch Strategy* (population figures based on 2001 Census data as it is only dataset with breakdowns for gender and age groups required. Also incorporates latent demand)

**CITY OF WOLVERHAMPTON COUNCIL  
OPEN SPACE STRATEGY AND ACTION PLAN UPDATE**

---

## CITY OF WOLVERHAMPTON COUNCIL OPEN SPACE STRATEGY AND ACTION PLAN UPDATE

Table 3.2: Comparison with Wolverhampton Standards for Different Types of Open Space – 2010 (ha per 1,000 popn **below/above standard**)

| Analysis area        | Current population (2010) | Parks       |       | Natural green space |       | Provision for children |        | Provision for young people |        | Amenity green space |       | Allotments    |        | Outdoor sports (w/o golf) |       | All Open Space |       |
|----------------------|---------------------------|-------------|-------|---------------------|-------|------------------------|--------|----------------------------|--------|---------------------|-------|---------------|--------|---------------------------|-------|----------------|-------|
|                      |                           | 0.99        | 0.00  | 1.33                | 1.33  | 0.026                  | 0.002  | 0.018                      | 0.018  | 0.010               | 0.56  | 0.10          | 0.15   | -0.135                    | 1.35  | -0.35          | 4.42  |
| Bilston              | 41,587                    | 0.99        | 0.00  | 2.89                | 1.56  | 0.028                  | 0.002  | 0.028                      | 0.010  | 0.66                | 0.10  | 0.015         | -0.135 | 1.03                      | -0.35 | 5.64           | 1.22  |
| Central & South      | 63,845                    | 0.88        | -0.11 | 1.19                | -0.14 | 0.028                  | 0.002  | 0.012                      | -0.006 | 0.42                | -0.14 | 0.159         | 0.009  | 1.10                      | -0.25 | 3.92           | -0.50 |
| North                | 37,278                    | 1.40        | 0.41  | 1.29                | -0.04 | 0.029                  | 0.003  | 0.016                      | -0.002 | 0.72                | 0.16  | 0.135         | -0.015 | 1.85                      | 0.50  | 5.99           | 1.57  |
| Tettenhall           | 50,334                    | 0.82        | -0.17 | 0.95                | -0.38 | 0.021                  | -0.005 | 0.006                      | -0.012 | 0.44                | -0.12 | 0.289         | 0.139  | 1.61                      | 0.26  | 4.65           | 0.23  |
| Wednesfield          | 46,310                    | 0.94        | -0.05 | 0.60                | -0.73 | 0.024                  | -0.002 | 0.033                      | 0.015  | 0.67                | 0.11  | 0.108         | -0.042 | 1.29                      | -0.06 | 3.81           | -0.61 |
| <b>Wolverhampton</b> | <b>239,354</b>            | <b>0.08</b> |       | <b>0.27</b>         |       | <b>0.00</b>            |        | <b>0.005</b>               |        | <b>0.11</b>         |       | <b>-0.044</b> |        | <b>0.10</b>               |       | <b>0.53</b>    |       |

# CITY OF WOLVERHAMPTON COUNCIL

## OPEN SPACE STRATEGY AND ACTION PLAN UPDATE

### Quality standards

Each site has been allocated a quality and value score. The scores for each site are then applied against a threshold in order to distinguish sites of a high, average and low quality and/or value. This distinguishing of sites enables for prioritisation in the action planning stage following application of the quantity and accessibility standards. It also identifies site specific quality/value issues that require addressing.

Site by site quality and value scoring has been carried out as a desk based exercise in partnership with the Wolverhampton City Council Parks Team and Open Space Steering Group. The scoring should be used by WCC to create a quality and value matrix for sites within the City. Quality and value scores are provided in a separate Excel project database which accompanies this report.

KKP developed specific quality and value criteria to assess sites against. To give a consistent and robust approach to scoring, workshop sessions were facilitated with WCC Area Managers to score sites for quality. Value scoring was initially developed by KKP and agreed with WCC officers.

### Quality and value

Quality and value are fundamentally different and can be unrelated. For example, a high quality space may be in an inaccessible location and, thus, be of little value; while, if a rundown (poor quality) space may be the only one in an area and thus be immensely valuable. As a result, quality and value are also treated separately in terms of scoring.

In order to determine whether sites are high, adequate or low quality/value (as recommended by Government guidance); the results have been colour-coded against a baseline threshold (high being green, amber being adequate and low being red).

The primary aim of applying a threshold or standard is to identify and justify sites which should be given the highest level of protection by the planning system, those which require enhancement in some way and those which may no longer be needed (particularly in conjunction with quantity and accessibility standards).

### Quality

The table below summarises the results of the quality assessment for open spaces in Wolverhampton.

Table 3.3: Quality scores for all open space typologies

| Typology                              | Maximum score | Percentage (%) |            |               | Number of sites |          |      |
|---------------------------------------|---------------|----------------|------------|---------------|-----------------|----------|------|
|                                       |               | Lowest score   | Mean score | Highest score | Low             | Adequate | High |
| Allotments                            | 5             | 20%            | 54%        | 80%           | 1               | 25       | 6    |
| Amenity green space                   | 24            | 0%             | 69%        | 100%          | 21              | 127      | 51   |
| Provision for children & young people | 6             | 33%            | 91%        | 100%          | 3               | 33       | 93   |
| Parks                                 | 24            | 42%            | 81%        | 100%          | 1               | 24       | 29   |
| Natural green                         | 3             | 0%             | 65%        | 100%          | 26              | 37       | 40   |

## CITY OF WOLVERHAMPTON COUNCIL OPEN SPACE STRATEGY AND ACTION PLAN UPDATE

|              |           |           |          |             |           |            |            |
|--------------|-----------|-----------|----------|-------------|-----------|------------|------------|
| space        |           |           |          |             |           |            |            |
| <b>TOTAL</b> | <b>24</b> | <b>0%</b> | <b>-</b> | <b>100%</b> | <b>52</b> | <b>247</b> | <b>219</b> |

Most sites score either adequate (48%) or high (43%) for quality with only a small proportion of all sites (10%) receiving a low quality score.

Provision for children and young people scores well compared to other typologies; with 72% of such sites scoring high for quality. Play areas generally have a good range of equipment. The three lowest scoring sites are St Chad's Recreation Ground Play Area, Stirling Road Play Area and Laburnum Street Play Area. All are identified as having a poor range and quality of equipment.

More natural and semi natural green space sites (25%) score low for quality compared to any other typology. This reflects the generally lower mark which sites receive for conservation and biodiversity, such as designated Sites of Local Importance for Nature Conservation (SLINC) and Sites of Importance for Nature Conservation (SINC).

The typologies of allotments, parks, amenity green space and natural green spaces are generally all of an adequate or high quality. In particular most allotments (78%) and amenity green spaces (64%) are rated as being of an adequate quality.

The one allotment site with a low quality score is Slim Avenue Allotments. It has no toilet provision, water supply or onsite parking. Two allotment sites do not receive a quality score; Lich Avenue and Elmdon Close. These are managed by the Council but are identified as currently being closed for allotment usage.

Oak Street is the only park site to receive a low quality score. The site scores poorly on quality of paths and access for all. The site also has low scores for ancillary facilities, information, conservation and biodiversity and its general maintenance.

### **Value**

The table below summarises the results of the value assessment for open spaces in Wolverhampton.

*Table 3.4: Value scores for all open space typologies*

| Typology                              | Maximum score | Percentage (%) |            |               | Number of sites |            |
|---------------------------------------|---------------|----------------|------------|---------------|-----------------|------------|
|                                       |               | Lowest score   | Mean score | Highest score | Low             | High       |
| Allotments                            | 30            | 17%            | 32%        | 53%           | 2               | 30         |
| Amenity green space                   | 37            | 11%            | 21%        | 46%           | 9               | 190        |
| Provision for children & young people | 15            | 33%            | 48%        | 93%           | 1               | 128        |
| Parks                                 | 52            | 13%            | 28%        | 50%           | 1               | 53         |
| Natural green space                   | 35            | 9%             | 27%        | 51%           | 9               | 94         |
| <b>TOTAL</b>                          | <b>52</b>     | <b>9%</b>      | <b>-</b>   | <b>93%</b>    | <b>22</b>       | <b>495</b> |

The vast majority of sites (96%) are assessed as being of high value. Similar to the quality scores, provision for children and young people is highly valued with nearly all sites (99%) being assessed as high value. This reflects the unique benefits such sites provide to local communities, particularly for children and families. A similar very high proportion of parks

# CITY OF WOLVERHAMPTON COUNCIL

## OPEN SPACE STRATEGY AND ACTION PLAN UPDATE

---

(98%) also score high for value. This is due to the number of sites identified as providing a range of different and popular uses.

A higher proportion of natural green space sites (9%) score low for value compared to any other typology. This is a reflection of the number of sites that do not have a particular designation, either historic or conservation, and/or lack a multi-functional role. However, the value these sites play in providing a visual amenity and a break from the built form remains important in a wider context.

A high value site is considered to be one that is well used by the local community, well maintained (with a balance for conservation), provides a safe environment and has features of interest; for example play equipment and landscaping. Sites that provide for a cross section of users and have a multi-functional use are considered of a higher value than those that offer limited functions and that are thought of as bland or unattractive.

### ***Quality and Value Matrix***

The assessment of open space quality and value has been used to help develop the action plan by identifying sites which should be given the highest level of protection, those which should be prioritised require enhancement and those which may be surplus to requirements as open space (in conjunction with application of the quantity and accessibility standards).

Each site has been allocated a quality and value score (provided in a separate Excel spreadsheet). This score allows each site to be placed in a high/average/low category for quality and a high/low category for value. This categorisation can then be used to inform recommended actions for each site, as detailed below:

#### **High quality/high value**

Ideally all open spaces should fall into this category and the planning system should then seek to protect them. Sites in this category should be recognised as forming a key part of the open space network.

#### **High quality/low value**

The preferred approach to an open space in this category should be to enhance its value by widening the range of open space functions it performs and/or by securing greater community involvement.

#### **Average quality/high value**

The preferred approach to an open space in this category should be to enhance quality where possible and to protect through the planning system.

#### **Low quality/high value**

The preferred approach to an open space in this category should be to enhance quality as a priority and to protect through the planning system.

#### **Average quality/low value**

The preferred approach to an open space in this category should be to enhance its value by widening the range of open space functions it performs and / or by securing greater

# CITY OF WOLVERHAMPTON COUNCIL

## OPEN SPACE STRATEGY AND ACTION PLAN UPDATE

---

community involvement. Quality improvements may also be necessary to achieve increased value. Sites in this category may become 'surplus to requirements' if value cannot be increased.

### **Low quality/low value**

The preferred approach to an open space in this category should be to seriously consider if there is any potential to enhance both value and quality. If this is not practical or viable, the open space may then be considered 'surplus to requirements'. If the site is not suitable for any purpose other than open space in the long term, value and quality improvements may still need to be considered.

This quality and value categorisation of sites is used to inform the action planning section in this report. It helps to identify sites which should be given the highest level of protection, those which should be prioritised for enhancement and those which may be surplus to requirements. This is carried out in union with the surplus and deficiency findings from application of the quantity and quality standards.

### **Access standards**

Access standards are the distances that typical users can reasonably be expected to walk to each type of open space. An access standard has been set for each typology with the exception of green corridors and cemeteries, as recommended by PPG17 guidance.

The access standards are (in the main) derived from the findings of the local needs assessment. However, the challenging 5 minute walk time standard set in the 2008 OSANA for amenity green space has been increased to a 10 minute walk time standard, which is more in line with survey results.

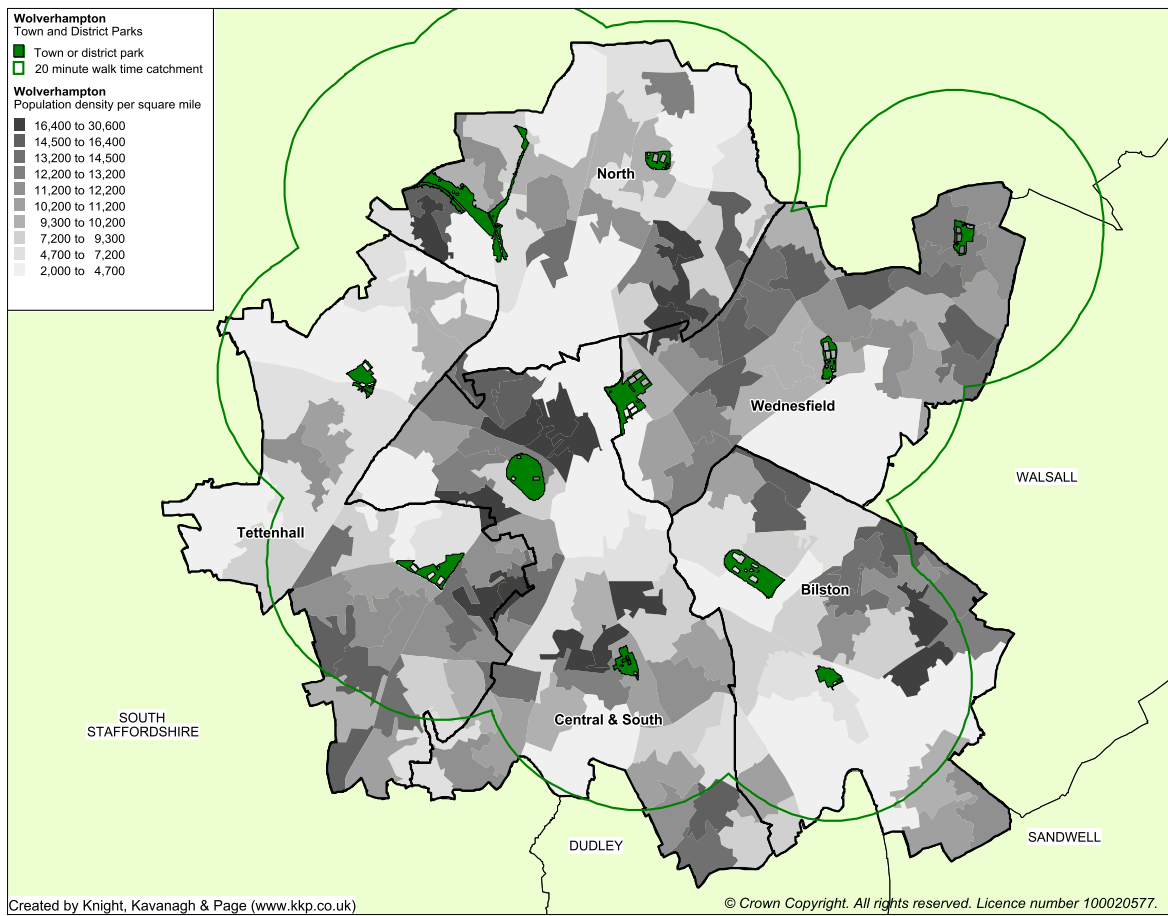
*Table 3.5: Accessibility standards*

| <b>Typology</b>            | <b>Accessibility standard</b>  |
|----------------------------|--|
| Parks                      | District - 20 minute walk<br>Neighbourhood - 10 minute walk<br>Pocket – 10 minute walk |
| Natural green space        | 15 minute walk   |
| Provision for children     | 10 minute walk   |
| Provision for young people | 20 minute walk   |
| Amenity green space        | 10 minute walk   |
| Allotments                 | 15 minute walk   |
| Outdoor sports facilities  | 15 minute walk   |

The maps on the following pages show the access catchments for different types of open space. This allows gaps in provision to be identified which affect existing or proposed residential areas.

# CITY OF WOLVERHAMPTON COUNCIL OPEN SPACE STRATEGY AND ACTION PLAN UPDATE

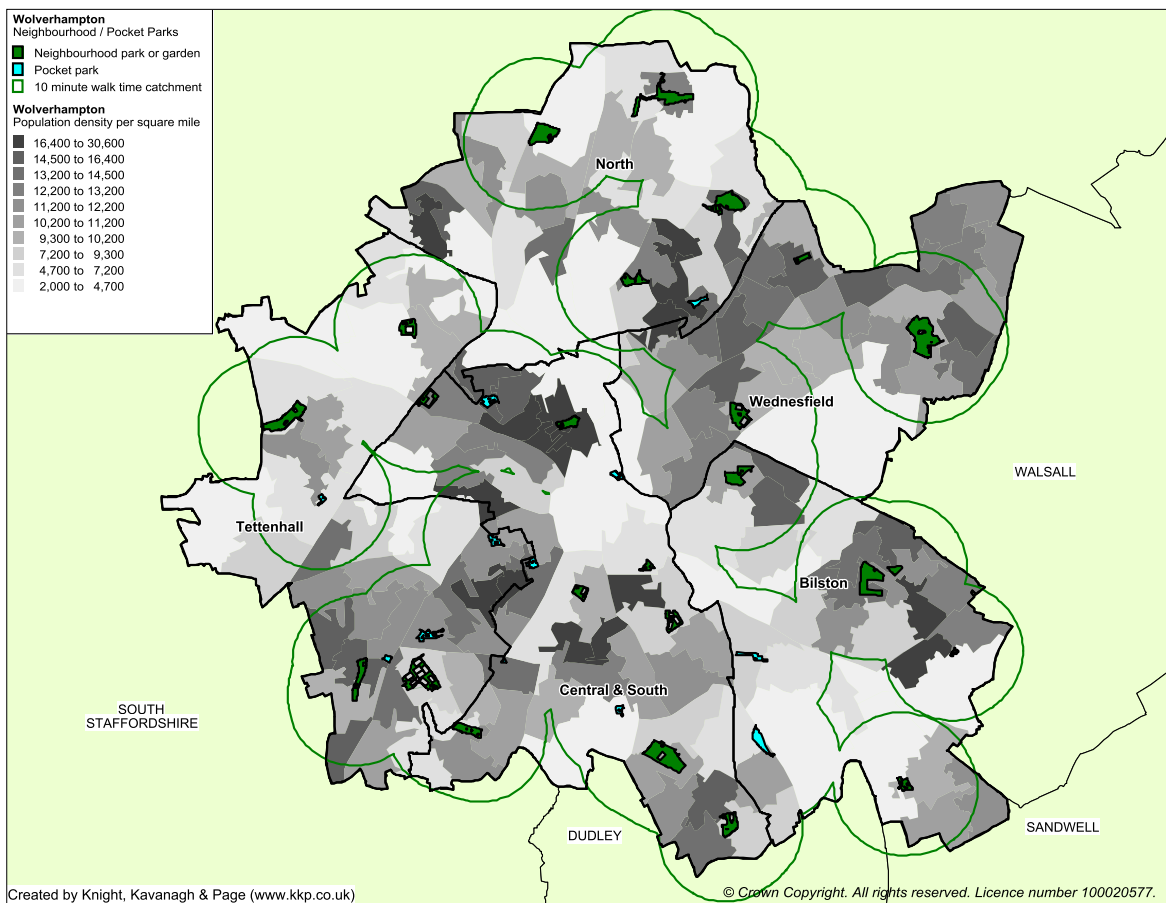
## District parks





# CITY OF WOLVERHAMPTON COUNCIL OPEN SPACE STRATEGY AND ACTION PLAN UPDATE

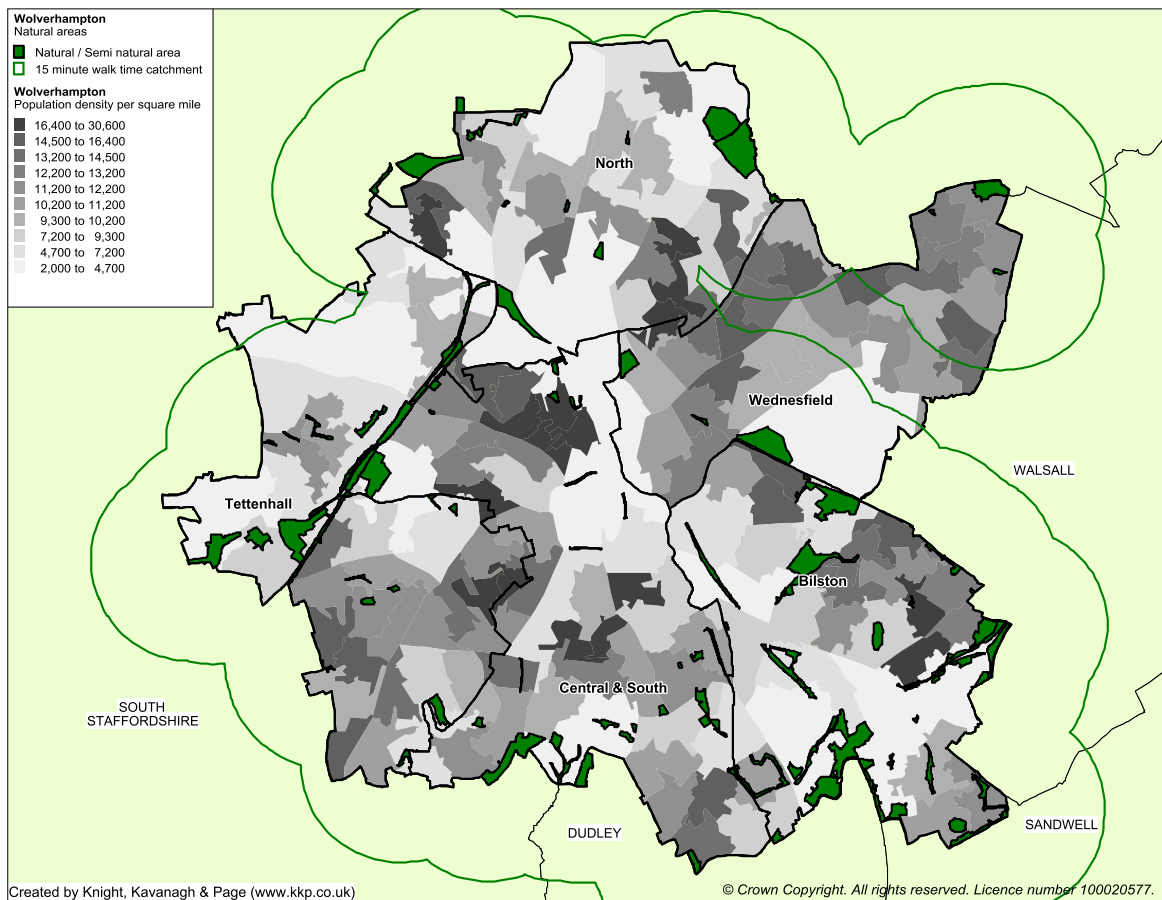
## Neighbourhood and pocket parks



Gaps in District Park provision are identified on the outskirts of Tettenhall, Central & South and Bilston. There are also gaps in Neighbourhood / Pocket Park provision in southern Tettenhall and Bilston. Therefore there is a clear need to identify sites for new Park provision in southern Tettenhall and Bilston. Based on Greater London Authority (GLA) guidance for minimum site sizes a new Park should be at least 2 hectares in size.

# CITY OF WOLVERHAMPTON COUNCIL OPEN SPACE STRATEGY AND ACTION PLAN UPDATE

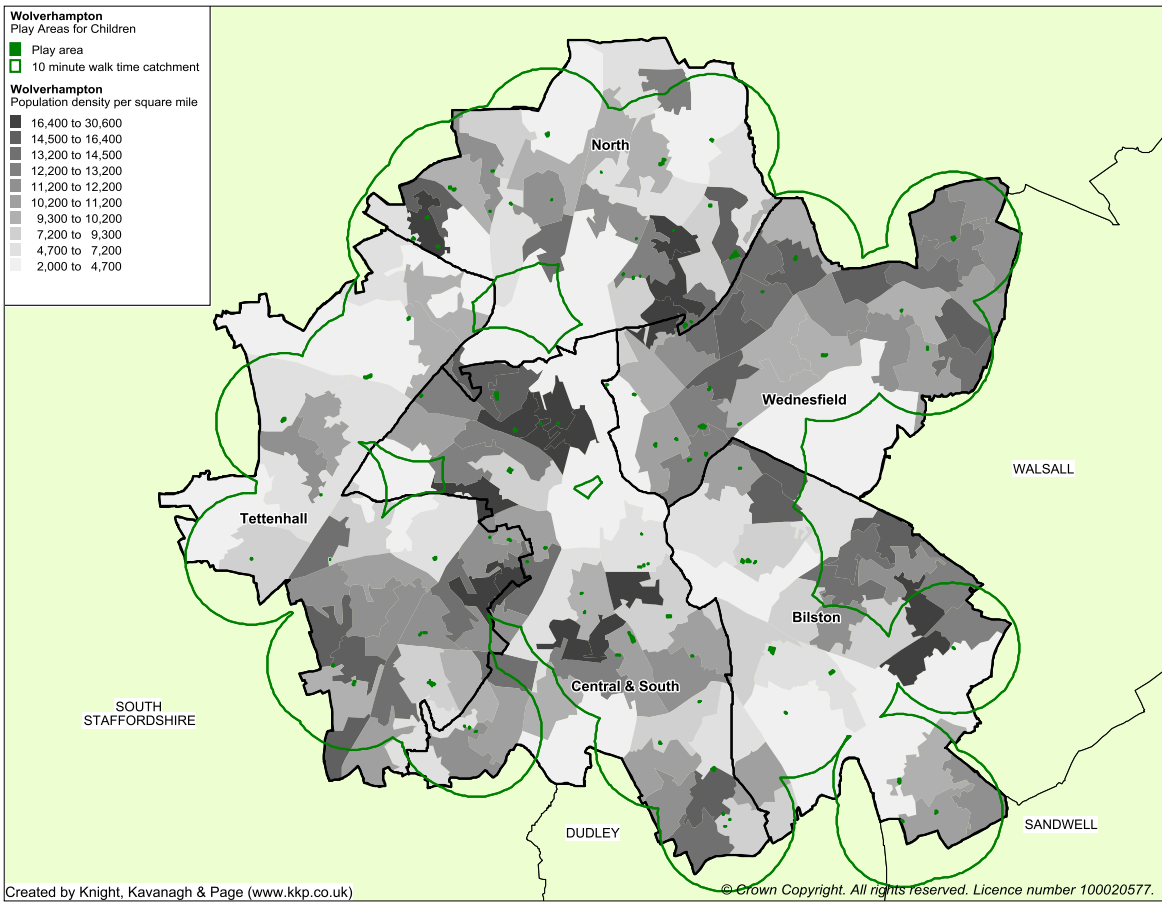
## Natural green space



There is good coverage of provision across all analysis areas. The only area with a gap in provision is to the north of Wednesfield, where there is also a large deficiency in quantity. It is likely that provision of one additional site in this area could meet the catchment deficiency. Based on Greater London Authority (GLA) guidance, natural green spaces should be at least 0.4 hectares in size.

# CITY OF WOLVERHAMPTON COUNCIL OPEN SPACE STRATEGY AND ACTION PLAN UPDATE

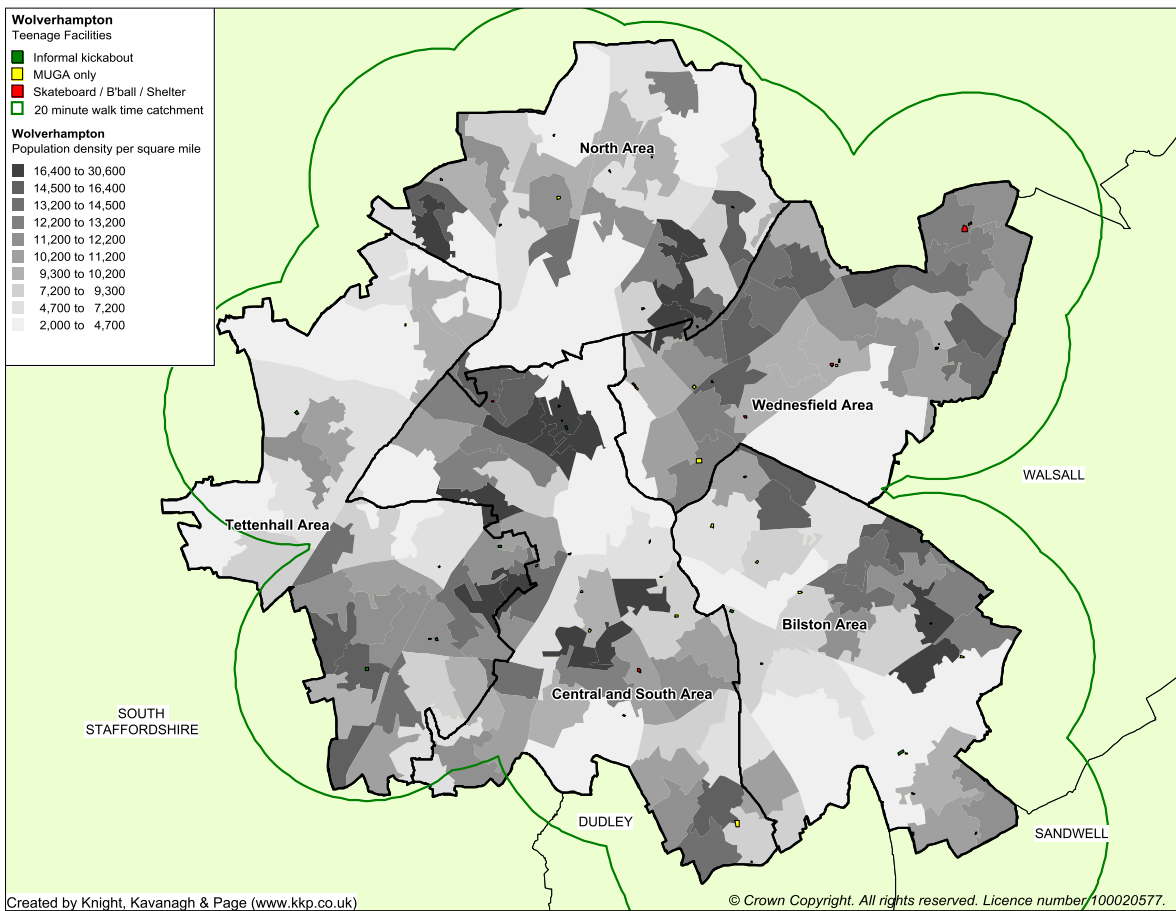
## Provision for children



Minor gaps in the catchment mapping are noted across the City. The most significant gap is in the north of the Bilston analysis area (the gap in Wednesfield covers an industrial area). It is likely that provision of two additional sites in this area could meet the catchment deficiency.

# CITY OF WOLVERHAMPTON COUNCIL OPEN SPACE STRATEGY AND ACTION PLAN UPDATE

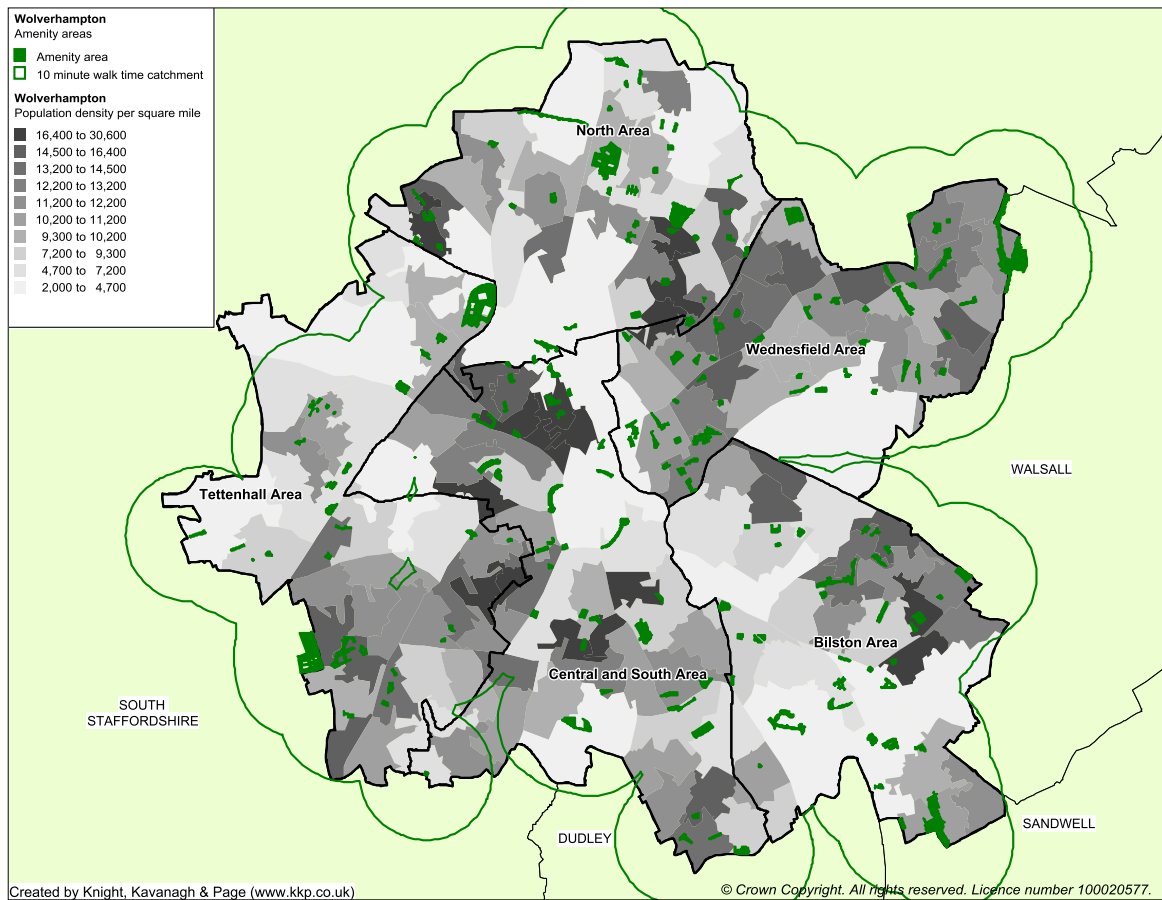
## Provision for young people



There is good coverage of provision across all analysis areas. Only a minor gap to the West of Tetterhall is noted.

# CITY OF WOLVERHAMPTON COUNCIL OPEN SPACE STRATEGY AND ACTION PLAN UPDATE

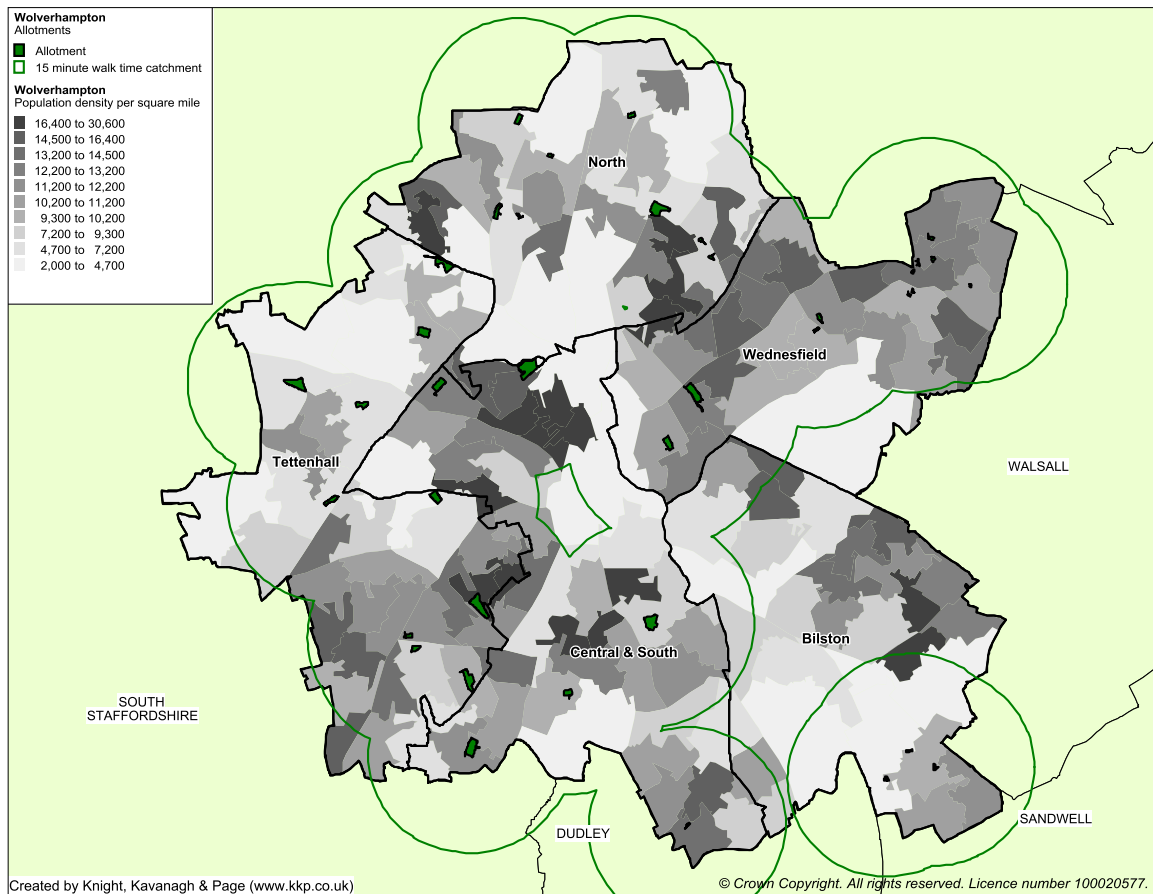
## Amenity green space



No significant gaps are noted across the City based on the 10 minute catchment standard. Taking into account the distribution of Parks across the City, which also perform a similar function to amenity green space, these gaps reduce further.

# CITY OF WOLVERHAMPTON COUNCIL OPEN SPACE STRATEGY AND ACTION PLAN UPDATE

## Allotments



Application of the standard shows a significant gap in the Bilston area (the gap in Wednesfield covers an industrial area). It is likely that provision of one or two additional sites could help to meet the deficiency identified. Based on the average allotment plot size in Wolverhampton suggested minimum site sizes for each new site required should be of a minimum 20 plots.

# CITY OF WOLVERHAMPTON COUNCIL

## OPEN SPACE STRATEGY AND ACTION PLAN UPDATE

---

### 4. SUMMARY

A summary of current performance against quantity, quality and access standards is set out below for each analysis area.

#### ***Bilston Analysis Area***

Overall the Bilston area has a sufficient quantity of open space. There is a large quantity of amenity green space and natural green space, some of which is of SLINC / SINC value. However, the quality, access and safety of these spaces is sometimes poor. The area will also be a focus for housing growth in future years, requiring more quality open space to serve new residents and support regeneration.

The area has a number of District Parks serving a wide area, which are known for their distinctive character and could benefit from improvements. However, some areas have a lack of Neighbourhood Parks to meet local needs and there are three areas which are a priority for creation of new Parks – to the south of Bilston Town Centre; Ettingshall; and The Lunt.

There is a deficiency in the quantity of outdoor sports provision in the area, which will increase by 2026 due to population growth. However, the Playing Pitch Strategy and Action Plan (2015) concludes that there are sufficient playing pitches across the area to meet current needs and that projected future shortfalls in smaller youth and mini pitches could be met by making maximum use of community use football pitches in the area which have spare capacity.

There is an area with poor access to children's play facilities to the north of this Analysis Area and the overall level of provision for children only just exceeds the quantity standard. The south of the area will be a focus for housing growth in future years, providing additional demands for children's play and also opportunities to provide new facilities. Arnhem Road Open Space is suggested for consideration as a site that could be appropriate for any new provision for children. Furthermore the Stirling Road Play Area site is highlighted as being of a low quality compared to other sites. Consideration could also be given to rationalising play provision i.e. disposing of poor quality site in order to fund improvements/extensions to existing better quality sites.

There are significant parts of Bilston which do not have good access to allotments, and existing allotments are full. This area also contains the one allotment site (Slim Avenue Allotments) in Wolverhampton to score low for quality.

#### ***Central and South Analysis Area***

There are low levels of open space provision across the Central and South Analysis Area, which includes Wolverhampton City Centre and high density, inner city neighbourhoods to the south. Shortfalls are identified for parks, natural green space, provision for young people, outdoor sports and amenity green space. There is little potential to create new open space through development, therefore it is important to maximise use of existing open space, including bringing amenity green space up to park standard and maximising community use of sports pitches.

West Park (the "City" Park) falls within this Analysis Area and, due to its size, the Area is above standard for District Parks. However, there is a lack of Neighbourhood Parks to serve the rest of the area. Increasing the range of functions provided by larger amenity

## **CITY OF WOLVERHAMPTON COUNCIL**

### **OPEN SPACE STRATEGY AND ACTION PLAN UPDATE**

---

green space and natural green spaces could help address gaps in provision. There are plans for housing growth and regeneration in the City Centre, which already has a large student population. The City Centre has little open space but is served by a network of canals which link to open spaces further afield.

There is a deficiency in the quantity of outdoor sports provision in the area, which will increase by 2026 due to population growth. The Playing Pitch Strategy and Action Plan (2015) concludes that there are sufficient football pitches across the area to meet current and future needs, and recommends improvements to pitch quality, transfer of youth teams to youth pitches and exploring potential sites to provide a 3G artificial grass pitch. It is also recommended to improve pitch and changing facility quality at Newbridge Playing fields and provide security of tenure to address the poor quality of cricket pitch provision.

There is little natural green space in the north of the Area, where housing growth is planned in the City Centre and areas to the south, and some existing areas are of poor quality. There is little potential to provide new open space through development in this area, but opportunities to improve the quality of existing sites or to provide more natural habitat in existing open spaces could be explored.

In general standards for children and young people's provision are met, although there is a gap in access to children's play provision to the south of the analysis area, and the quantity (area in ha) of provision for young people is below standard.

The Analysis Area has good access to amenity green space, although there is a shortfall against quantity standards of 0.14 ha per 1,000 population and a number of sites are of a poor quality. The priority should be to first address qualitative issues at sites

There is a sufficient amount of allotments and these are well distributed across the area.

#### ***North Analysis Area***

The North Analysis Area has a generally good level of open space provision of different types. There are minor shortfalls in quantity of natural green space, provision for young people and allotments.

There are a number of parks and amenity green spaces in the area which are of an average quality. There is a gap in park provision in the Oxley area, which is being addressed through provision of a new, high quality Neighbourhood Park as part of the Goodyear housing development.

The area has a large amount of outdoor sports space and will benefit from the installation of a new artificial grass pitch at Our Lady and St Chad's Catholic School and Sports College, which will be available for community use for 39 hours a week, and completion of the new multi-pitch site at Barnhurst Lane, which will address current and future shortfalls in football pitch provision.

There is generally good access to natural green space, although the majority of sites are of an average to poor quality. There is generally good access to allotments across the analysis area, although the quantity of provision is below standard and the quality of allotment sites is generally average.

No quantitative deficiency is identified in provision for children but there is poor access to facilities in the north of the analysis area, where there are areas of amenity green space



## CITY OF WOLVERHAMPTON COUNCIL

### OPEN SPACE STRATEGY AND ACTION PLAN UPDATE

---

which could accommodate new facilities. A minor shortfall in provision for young people is identified in quantitative terms. However, no significant issues are highlighted in terms of quality or access standards.

#### ***Tettenhall Analysis Area***

Overall the Tettenhall Analysis Area has insufficient quantitative provision for all typologies with the exception of allotments and outdoor sports provision.

There is a shortfall in the overall area of parks and the Compton, Wightwick and Castlecroft areas do not have access to a Park, and also have poor access to amenity open space and provision for children and young people. Tettenhall Upper Green / Lower Green and Penk Rise do not provide the full range of facilities which would be expected for Neighbourhood Parks. There are a number of smaller park sites that score average in terms of quality and the Oak Street Open Space site is the only low quality scoring park in the City.

There are few opportunities to provide new open space in the area, however disposal of small areas of surplus open space and new housing developments have the potential to fund improvements and provide new facilities. The Tettenhall Neighbourhood Plan covers the area, which incorporates proposals for protection and improvement of open space in the area.

There is a good coverage of natural green space provision and the area benefits from good access to the only Local Nature Reserve (LNR) in Wolverhampton, Smestow Valley, which acts as a green lung extending throughout the area with a range of functions. A Management Plan is now in place for the LNR to guide future improvements, and there are plans to extend the LNR. However, there is a shortfall in quantity and a few sites are rated as having a poor quality and/or value score. Opportunities to improve or extend existing provision in the area should be explored. An option could be to provide more natural elements/areas in existing open spaces such as parks and amenity green spaces.

The area is below the quantity standard for amenity green space, with gaps identified in the west of the area. The main priority should be to address quality of provision before looking to provide further provision in these areas of Tettenhall (which are also lacking in parks provision). Application of the quality scoring highlights there are also five sites rated as being of a poor quality.

A shortfall in quantity of provision for children is identified and there are minor gaps in provision for children and young people towards the western edges of the area. This is a similar gap to that identified for parks provision. Any development of new parks provision in these areas should look to also feature provision for children and young people. Only the Laburnum Street site is rated as being of poor quality, and there is potential to dispose of this site to fund improvements in the local area.

There is an over supply of adult football pitches and a current and future shortfall of youth pitches. New junior pitches can be created by converting senior pitches and by looking to open up school pitches for community use. There is a need to protect and maximise use of cricket sites. Two Artificial Grass Pitches (AGPs) used for hockey have recently been resurfaced at Aldersley Leisure Village. The relocation of Wolves Academy from Aldersley Leisure Village to Wolves training ground at Compton, including a £700k upgrading of pitches, and transfer of use of the dome at Aldersley Leisure Village to Wolves

## CITY OF WOLVERHAMPTON COUNCIL OPEN SPACE STRATEGY AND ACTION PLAN UPDATE

---

Community Trust has also been recently completed. However, there is a need to identify a potential site to provide an additional 3G artificial grass pitch to serve the Tettenhall area.

### ***Wednesfield Analysis Area***

The Wednesfield Analysis Area has the lowest level of general provision for open space in the City, and has below standard provision for all types of open space, except for provision for young people and amenity green space.

There is a small shortfall in the quantity of parkland and some average quality parks, however all parts of the area have good access to a park, including housing growth areas. The area is also well served by outdoor sports space and pitches. A current shortfall in artificial grass pitch provision will be met through provision of a new 3G AGP at Heath Park Business & Enterprise College and in Walsall at the Sporting Kalsa project.

The Wednesfield Analysis Area has the greatest shortfall in the City against the quantity standard for natural green space. There are also large areas with poor access to natural green space, particularly in the centre of the area, and there are few natural green space sites in total, with only one good quality site.

The area has good access to amenity green space and provision for children and young people, and has a surplus of amenity green space. However, quality of amenity green space is variable with a number of sites of a poor quality.

There is a shortfall in allotment provision in the area, and only one allotment site is of a high quality.

# CITY OF WOLVERHAMPTON COUNCIL

## OPEN SPACE STRATEGY AND ACTION PLAN UPDATE

---

### 5. VISION

The variety of open space provision across Wolverhampton provides opportunity for all people to play, exercise, meet one another, and for public events to be held. As a focal point of a community, parks and open spaces can contribute to building community spirit and community cohesion. This role, however, must be carefully balanced with the role of open spaces as a home to wildlife and natural habitats.

The City Strategy<sup>2</sup> vision is about providing a city to be proud of and creating new opportunities for local people, communities and businesses. Its goal for Wolverhampton is *prosperity for all*. Making sure everyone benefits from the goal; including the most vulnerable people. Its aim is to create new job opportunities, support businesses and communities and close gaps in skills, health and well-being. Based on this, the proposed vision for parks and open spaces is that:

*'By 2026 Wolverhampton will have a vibrant and diverse range of quality parks and open spaces, well distributed across the City. Sites will reflect local needs and historical and natural characteristics as well as the overall needs of the City. The spaces will form a network which maximises opportunities for everyone to interact with their local community and area whilst also attracting people into the City'*

#### **Aims**

The following section provides a framework for the Council and its partners to maintain and improve parks and open spaces across the City. In order to achieve the vision of providing quality, vibrant and diverse parks and open spaces across the City, it is vital that the process of agreeing the Strategy and Action Plan provides all stakeholders with an opportunity to explore issues and prioritise key actions within a clear, practical and achievable framework. This includes the opportunity to incorporate the aims of other strategies and action plans in relation to open spaces.

The Strategy and Action Plan should respond to key drivers, including the need to address identified deficiencies, protect existing sites of high quality and value and set out a framework for future investment, including rationalisation of low value sites.

The Strategy is focused on achieving four aims (not in any priority and summarised in the text boxes below). A number of objectives need to be implemented to enable these aims to be realised. It is recommended that the Council adopt the aims and objectives as policy:

#### **AIM 1**

Provide new open spaces to meet current and future needs that are designed to attract people to the City.

#### **AIM 2**

Focus on providing a network of strategic sites, which are high quality and meet the needs of local communities.

---

<sup>2</sup> Wolverhampton City Strategy 2011-2026, Wolverhampton Partnership, 2011

# CITY OF WOLVERHAMPTON COUNCIL

## OPEN SPACE STRATEGY AND ACTION PLAN UPDATE

---

---

### **AIM 3**

Provide a diverse natural environment helping to support and protect wildlife habitats, which are well connected and accessible to all.

### **AIM 4**

Improve and widen access to recreation opportunities, increasing participation in sport and fitness activities and helping to improve peoples' health and well-being.

## **Objectives**

Each of the four aims has a set of objectives designed to enable their delivery.

### **AIM 1**

Provide new open spaces to meet current and future needs that are designed to attract people to the City.

Adopt quantity, quality and access standards which are achievable and sustainable and which support current and future needs.

- f. Use the Strategy to provide an evidence base for the Local Plan and to secure appropriate new and improved open space through development.
- g. Prioritise actions which address key shortfalls against adopted standards, so that all residents have reasonable access to a variety of open space types of an acceptable quality.
- h. Ensure new open spaces provided through development are of a high quality and will be well maintained in perpetuity.
- i. Where open space is lost to development, ensure that losses are mitigated for and that mitigation measures are focused on the priority actions.

### **AIM 2**

Focus on providing a network of strategic sites, which are high quality and meet the needs of local communities.

- j. Focus available funding from developments and capital budgets on investment in the network of strategic sites.
- k. Rationalise existing open space provision where this will support the creation of a network of strategic sites and better meet local needs.
- l. Ensure that all significant changes to the open space network are subject to community consultation.

# CITY OF WOLVERHAMPTON COUNCIL

## OPEN SPACE STRATEGY AND ACTION PLAN UPDATE

---

---

### **AIM 3**

Provide a diverse natural environment (ecological and geological) helping to support and protect wildlife habitats, which are well connected and accessible to all, and adapt to climate change.

- m. Maintain and increase the wildlife value of key sites (SINCs, SLINCs and LNRs) through protection, good management and enhancement.
- n. Increase the wildlife value of open spaces generally, and foster an appreciation of ecology and the natural world.
- o. Promote use of the natural environment to improve the health and well being of residents and visitors.
- p. Make use of native species and species resistant to climate change in planting schemes as far as possible
- q. Encourage use of open space for fuel, food and timber crops e.g. coppicing, biomass

### **AIM 4**

Improve and widen access to recreation opportunities, increasing participation in sport and fitness activities and helping to improve peoples' health and well-being.

- r. Adopt local access standards as outlined in the OSANA Review Report.
- s. Where creation or improvement of open space is planned, ensure new provision is fully accessible to all residents (including the elderly, disabled, young people, BME groups and girls/women) in accordance with the Equality Act 2010.
- t. Encourage partners to work together to maximise safe access to open space, including canals, school playing fields and privately owned spaces, where appropriate.
- u. Maintain a safe, clean, accessible and attractive environment for children's play and for the leisure of older and disabled residents and families.
- v. Ensure a sufficient quantity, quality and access of outdoor sports facilities through delivery of the objectives set out in the Wolverhampton Sport Development and Investment Strategy and the supporting Wolverhampton Playing Pitch Strategy and Action Plan.

# CITY OF WOLVERHAMPTON COUNCIL

## OPEN SPACE STRATEGY AND ACTION PLAN UPDATE

---

### Typology specific aims and objectives

An aim and objectives are provided for each type of open space as a mechanism for addressing issues identified through application of the standards.

#### **ALLOTMENTS**

To be secure, well kept sites providing communal places for growing produce whilst encouraging biodiversity, learning opportunities and healthier lifestyles both mentally and physically.

- ◀ Work towards meeting identified demand through exploring opportunities to provide additional plots.
- ◀ Strengthen ties and joint working with allotment societies and private landowners.
- ◀ Promote best practice gardening examples designed to increase biodiversity.

The Allotments Act 1925 sets out the statutory duties that all Council's must comply with. Allotments have evolved through a rich and varied history of social and economic change, the most notable being the 2nd World War where the public were encouraged to 'Dig for Victory'. The first legislative reforms date back to the Enclosures Act of 1845.

There are many benefits of renting an allotment:

- growing fresh fruit and vegetables, free from artificial additives
- home grown, fresh flowers at a fraction of the high street cost
- healthy outdoor activity
- a place to relax and unwind
- meeting new friends
- on site gardening shop at some allotments
- low cost rental

The majority of allotment sites have a site secretary or a nominated person that performs the role of the secretary.

There are over 1,100 allotment plots within 33 sites across the City at present. Self-management of all allotment sites is actively encouraged. At present 10 allotment sites are self-managed by allotment holders with a site committee who set rental costs and manage their own funds and are responsible for their own repairs and maintenance. WCC manage the remaining 23 sites.

#### **AMENITY GREEN SPACE**

To be accessible and safe green spaces which visually enhance the appearance of the local environment and allow opportunities for the local community to play, meet and exercise.

- ◀ Ensure that new housing developments provide sufficient allowance for amenity green space.
- ◀ Encourage community involvement and ownership of sites through events, activities and active management (i.e. undertaking maintenance and site tidying).

#### **CEMETERIES AND CHURCHYARDS**

Make most effective use of cemeteries and churchyards for appropriate community use

# CITY OF WOLVERHAMPTON COUNCIL

## OPEN SPACE STRATEGY AND ACTION PLAN UPDATE

---

---

and wildlife value.

- ◀ Provision to remain accessible and to be promoted as a recreation resource where appropriate.
- ◀ Encourage greater use of closed churchyards as areas for wildlife use through habitat development (e.g. introduction of bird/bat boxes, insect logs).
- ◀ Support use of cemeteries as an educational resource, both in terms of heritage and environmental value.

### **CIVIC SPACES**

To be clean, well maintained and safe sites which are accessible to all.

- ◀ Ensure provision is kept to a sufficient standard and elements such as landscaping are encouraged and designed to enhance the visual appearance of the area.
- ◀ Promote use of sites through holding appropriate community events and activities.

### **NATURAL GREEN SPACE**

Work to address deficiencies against adopted standards and encourage and recognise the wider habitat value of sites.

- ◀ Encourage provision of more onsite natural features (e.g. woodland planting, wildflower meadows, sustainable drainage features) particularly in areas of deficiency as a priority.
- ◀ Maintain and develop partnerships with external agencies and voluntary sector organisations involved in the management of sites.
- ◀ Work to raise awareness of accessible provision and the value of sites in terms of habitat creation and educational learning benefits.

### **OUTDOOR SPORTS FACILITIES**

Provide a range of sporting facilities which offer opportunities for all to participate in regular formal and informal sports and activities.

- ◀ Increase levels of participation in sport and physical activity by 1% every year until 2022.
- ◀ By 2022, significantly reduce the health costs of inactivity, particularly through those with health inequalities and obese and overweight people.
- ◀ Deliver improved sporting facilities across the City based on up to date understanding of supply and demand in partnership with National Governing Bodies and Sport England.
- ◀ Use the legacy of London 2012 and subsequent international sports events to raise the profile of the City's sport and physical activity offer.

# CITY OF WOLVERHAMPTON COUNCIL

## OPEN SPACE STRATEGY AND ACTION PLAN UPDATE

---

---

### **PARKS**

To be clean, safe and welcoming sites with a range of features which are accessible and attractive to users. Strategic sites should have an appropriate level of ancillary facilities (such as benches, bins and pathways) and be maintained to a high standard.

- ◀ Adopt a hierarchy approach to the categorisation of parks in order to prioritise investment.
- ◀ Keep up to date management plans for all strategic parks, focused on maintaining site quality and encouraging further use.
- ◀ Continue to improve quality by securing and making best use of funding, including developer contributions.
- ◀ Work to encourage and support the formation of 'friends of' groups to increase community engagement in the management and development of parks.

### **PROVISION FOR CHILDREN AND YOUNG PEOPLE**

Continue to provide inclusive and enriched places for children to play safely.

- ◀ Adopt a hierarchy approach to the categorisation of provision in order to prioritise investment opportunities.
- ◀ Investigate rationalisation of equipped play provision in terms of the quality and value matrix.
- ◀ Aspire to meet deficiencies identified in provision for young people against adopted standards.
- ◀ Use developer contributions to address the quality/capacity of current stock.



### 6. DELIVERY

The following section sets out best practice guidance intended to assist in implementing and achieving the aims and outcomes of the Strategy and Action Plan. These include how to encourage greater community involvement, maximising resources and delivery methods and procedures.

#### Resources

The efficient use of physical and financial resources is important. Increasingly more innovative and effective ways of maintaining and improving open spaces are being required. Some of the Strategy's actions suggest the need to explore alternative resources. This can be through increasing community involvement opportunities in elements such as managing and maintaining sites as well as seeking external funding sources.

Further to this, WCC and its partners should consider and explore the following when undertaking any site development or enhancement:

- ◀ Financial viability
- ◀ Security of tenure
- ◀ Planning permission requirements and any foreseen difficulties in securing permission
- ◀ Negotiation with landowners to increase access
- ◀ Seeking planning contributions to assist with the creation of new provision where need has been identified
- ◀ Seeking revenue funding from planning contributions in order to increase the capacity of existing site standards
- ◀ Analysis of shared site management options
- ◀ The availability of opportunities to lease sites to external organisations
- ◀ Options to support community groups to gain funding to enhance existing provision

The quality and value matrix can also be used as a tool to maximise the effectiveness of resources. For example, a site that is deemed low quality but high value should, in most instances, be identified as a priority for enhancement. A site of average quality but with low value is likely to be less of a priority for improvement. Further detail on the quality and value matrix and classifications is found in Appendix 2.

#### *Community funding sources*

Outside of the usual funding sources for open spaces (e.g. annual budget allocations, developer contributions) there are a number of other potential funding sources available to community and voluntary groups<sup>3</sup>.

---

<sup>3</sup> Source: Potential funding for community green spaces, DCLG

# CITY OF WOLVERHAMPTON COUNCIL

## OPEN SPACE STRATEGY AND ACTION PLAN UPDATE

---

Below is a list of funding sources that may be relevant for community improvement projects involving parks, open spaces and nature conservation in Wolverhampton.

- ◀ BIG Lottery Fund
- ◀ Awards for All
- ◀ Access to Nature (only eligible to existing Access to Nature projects)
- ◀ Heritage Lottery Fund
- ◀ Community Development Foundation
- ◀ Landfill Communities Fund
- ◀ Lloyds TSB Foundation
- ◀ Co-Operative Group Community Fund
- ◀ The Design Council
- ◀ Big Tree Plant
- ◀ Forestry Commission – English Woodland Grant Scheme
- ◀ Biffa Awards
- ◀ Birmingham and Black Country Nature Improvement Area (NIA)
- ◀ Environment Agency funding for sustainable drainage projects

There will be other sources of funding available in addition to those listed above. Sources of funding are continuously changing and regular checking of funding providers should be undertaken.

### **Nature Improvement Area**

Wolverhampton is part of the Birmingham and Black Country Nature Improvement Area (NIA). It is one of the first 12 NIAs in England. The vision of the NIA is to achieve long term environmental gains for the wildlife and people of the area by delivering targeted, on the ground, biodiversity projects at a landscape scale.

The NIA covering Wolverhampton is a partnership of over 50 organisations working together to significantly improve the natural environment of Birmingham, Dudley, Sandwell, Walsall and Wolverhampton. Funding is available through the NIA for delivery of projects designed to boost nature locally.

### **Community and partnership working**

Partnership working between WCC and various private, public and voluntary sectors is vital in order to deliver the Strategy, particularly as WCC does not own or provide all publicly accessible open space in the City.

In order to encourage greater community involvement in the management and maintenance of open spaces it is important to recognise that each site and each volunteer / community group is different and faces varying issues and circumstances. It is therefore unlikely to be feasible or appropriate to adopt a “one size fits all” approach

## CITY OF WOLVERHAMPTON COUNCIL OPEN SPACE STRATEGY AND ACTION PLAN UPDATE

---

A number of issues and questions need to be considered when determining the level of willingness and ability a volunteer or community group has to increase involvement in maintaining or managing a site. These include:

- ◀ The amount of voluntary time which can be committed on a regular basis
- ◀ The level of responsibility the group is willing to take on
- ◀ The role and duties the group is prepared to undertake
- ◀ Any incentives for greater involvement

Consideration must also be given to the ways in which volunteering is promoted throughout the City. Awareness of volunteering opportunities is limited and this is likely to inhibit people becoming volunteers. Equally it is important that volunteering opportunities are clearly defined and offer choice through a level of flexibility.

To engage with more volunteers there is a need to embark on a process of engaging the community more widely via improved marketing of opportunities. Some useful methods of boosting community relations with a view to greater involvement include:

- ◀ Using a range of techniques – websites, notices, leaflets etc. Also establish how communities like to be communicated with. Use resident surveys, community panels and groups to get messages across.
- ◀ Dispel myths – such as how service provision is allocated or how decisions are made.
- ◀ Publicise achievements – promote local interest stories and recognise individuals and communities accomplishments to the provision of open spaces.
- ◀ Celebrate – host and support an array of national and local events and festivals. Existing schemes such as Love Parks Week and the Green Flag Award are initiatives intended to promote community involvement.
- ◀ Feedback – always give honest views towards any comments or suggestions submitted. Don't ignore controversial or unpopular topics; arising issues need to be discussed and ironed out.

### **Case study: Pinecliff Gardens, Poole**

The site is a Mediterranean style garden on the seafront. It was created in this permanent style following the Council's policy to reduce the use of bedding and water in its parks. However, users of the site were unhappy at the change. Following local community discussions, the local Residents Association offered to undertake maintenance of the site. As part of an agreement the Council drew up a three year licence allowing the Association to upgrade and maintain the landscaping of the site. A requirement of the licence was for the Association to apply and achieve a Green Flag Community Award; reducing the need for the Council to inspect excessively whilst ensuring an acceptable quality standard. Issues regarding insurance, risk and sustainability were addressed through the use of a licence between the Council and the community group.

### *Working with partners*

Collaborative partnership working is essential to deliver the aims and objectives of the Strategy. Each partner organisation has its own objectives in order to deliver its individual goals. However, there are mutual benefits and overlapping aims for all parties. As stakeholders in the provision of open spaces and the wider green infrastructure network there is a need to work together to achieve these visions.

## **CITY OF WOLVERHAMPTON COUNCIL OPEN SPACE STRATEGY AND ACTION PLAN UPDATE**

---

This Strategy is a means to further engaging and initiating support with partners to establish a common set of principles for improving the quality of parks and open space provision across Wolverhampton.

Examples of key partners to work with include the Birmingham and Black Country Wildlife Trust, Canals and River Trust, Groundwork West Midlands, local Friends of Groups, Resident Associations, Conservation Groups. In addition national organisations such as the Environment Agency, English Heritage and Sport England are key contributors to the delivery of provision and can provide access to sources of funding.

# CITY OF WOLVERHAMPTON COUNCIL

## OPEN SPACE STRATEGY AND ACTION PLAN UPDATE

---

### 7. MONITORING FRAMEWORK

The implementation and delivery of the actions should be monitored on an annual basis. There are a number of ways to measure how effectively actions are being implemented. Some are based on previous National Indicators and others are locally derived. The WCC Annual Monitoring Report has been used to inform the development of the following proposed indicators:

- ◀ The number of open spaces managed to green flag award standard (annual).
- ◀ Performance against current open space quantity, access and quality standards, in the light of major changes to open space e.g. additions and losses through development, improvements in quality, changes in access (annual).
- ◀ Percentage of residents satisfied with the quantity, distribution and quality of different types of open space (every 3-5 years).

The Strategy and Action Plan is intended to act as a framework for joint action. Each individual service group of the Council should incorporate the actions into their respective service planning processes. Overall monitoring will be undertaken by the WCC Parks Team.

To ensure the Strategy and Action Plan are relevant and up to date a full review should be undertaken every three to five years. The Action Plan can be updated annually to reflect progress as part of the monitoring process.

### 8. OPEN SPACE ACTION PLAN

#### Introduction

The aim of the action plan is to identify priority actions which WCC should work towards in partnership with agencies, communities and landowners across the City. It should also be used by WCC to inform negotiations with developers to ensure adequate mitigation and provision to serve new residents is secured for the improvement of open space and recreation facilities across Wolverhampton. It should also advise on opportunities for rationalisation and potential change of use of sites.

#### Determining Priority Actions

The area actions build upon the initial recommendations made by the OSANA. These have been updated to reflect any changes in local circumstances and to address key issues resulting from the application of the revised standards and the new assessment of quality and value.

The purpose of the action plan is to identify and prioritise major or significant actions. There are a number of smaller or more detailed actions which fall outside the scope of the action plan but will still need to be addressed e.g. increasing frequency of maintenance, provision of litterbins and benches, or increasing value by widening the range of open space functions a site performs, raising awareness or increasing community engagement.

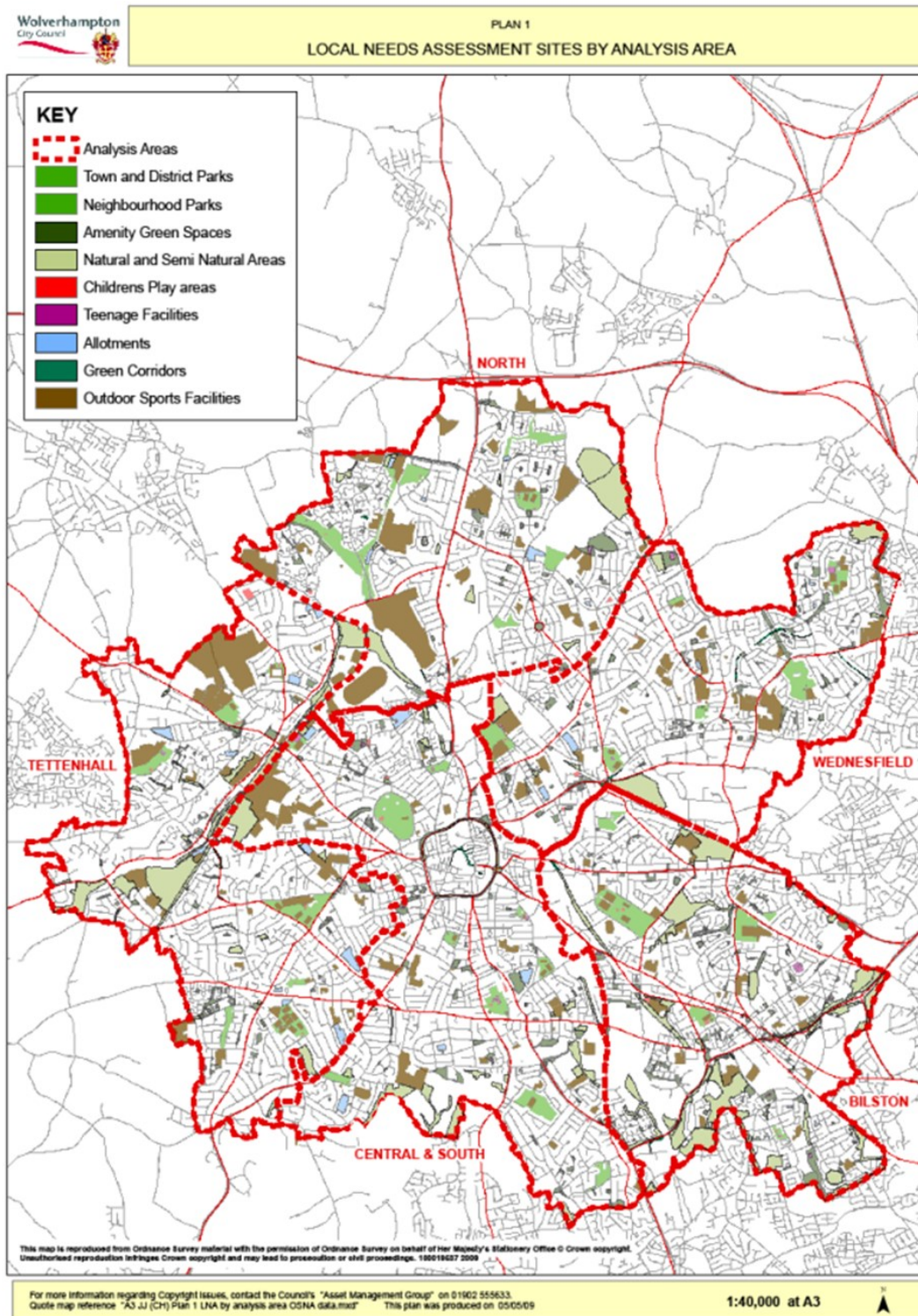
The following criteria have been used to identify priority actions:

- ◀ The action will help to address an identified deficiency against the revised open space quantity and access standards;
- ◀ The action will target a site identified as being of low quality and/or value;
- ◀ A project is currently planned or underway to enhance the site and funding may have been secured;
- ◀ The action is small scale or short term but will enhance the quality of current provision, whilst increasing community involvement;
- ◀ The action / site is identified as a priority in other strategies.

# CITY OF WOLVERHAMPTON COUNCIL OPEN SPACE STRATEGY AND ACTION PLAN UPDATE

## 9. ACTION PLAN BY AREA AND TYPOLOGY

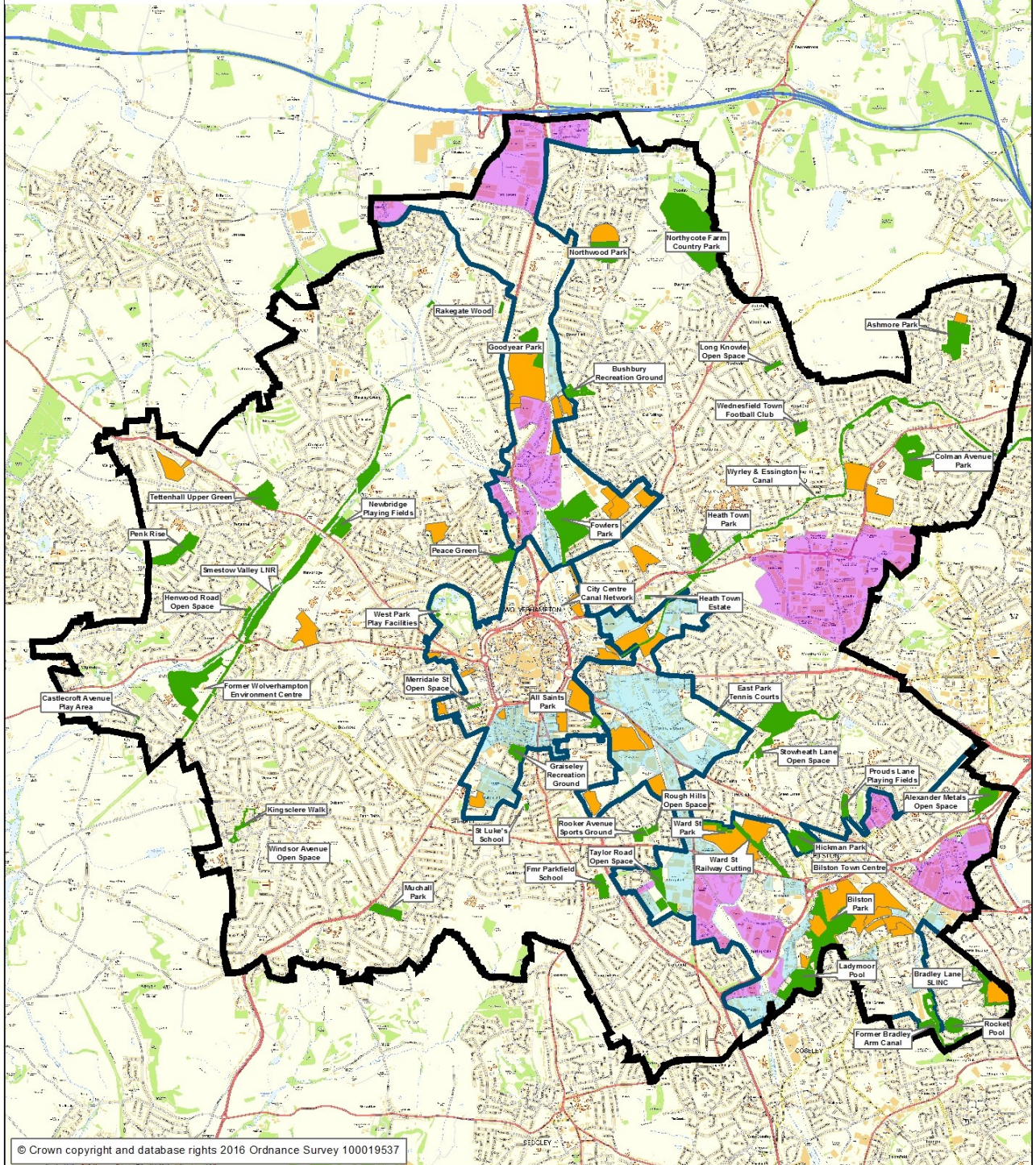
This section identifies priority actions for each of the five analysis areas, by type of open space. Included in the site specific actions are any current or planned improvement works identified on sites.



# CITY OF WOLVERHAMPTON COUNCIL OPEN SPACE STRATEGY AND ACTION PLAN UPDATE

## Wolverhampton Open Space Action Plan Priority Sites and Regeneration Context

- Priority Open Space Action Sites
- Regeneration Spine - Area Action Plans
- Committed Housing sites (>50 homes)
- High Quality Employment Land
- Local Quality Employment Land



© Crown copyright and database rights 2016 Ordnance Survey 100019537



# CITY OF WOLVERHAMPTON COUNCIL OPEN SPACE STRATEGY AND ACTION PLAN UPDATE

## Bilston

### *Total ha's Open Space for the Bilston Analysis Area and Wolverhampton*

| Area                  | Total open space (ha) | Current population (2010) | Parks        | Natural      | Provision for children | Provision for young people | Amenity      | Allotments  | Outdoor sports (w/o golf) | Cemeteries & Church yards | Green Corridor |
|-----------------------|-----------------------|---------------------------|--------------|--------------|------------------------|----------------------------|--------------|-------------|---------------------------|---------------------------|----------------|
| Bilston Analysis Area | 245.5                 | 41,590                    | 41.1         | 120.3        | 1.2                    | 1.2                        | 27.3         | 0.6         | 42.8                      | 10.1                      | 0.9            |
| <b>Wolverhampton</b>  | <b>1129.3</b>         | <b>239,350</b>            | <b>238.1</b> | <b>319.6</b> | <b>6.2</b>             | <b>4.3</b>                 | <b>134.1</b> | <b>35.4</b> | <b>322.4</b>              | <b>62.8</b>               | <b>5.1</b>     |

### *Comparison with Wolverhampton Standards for Each Type of Open Space (ha per 1,000 popn below/above standard)\**

|                                     | Total                                  | Parks                                 |      | Natural                               |                                       | Provision for children |  | Provision for young people             |  | Amenity                               |                                       | Allotments                            |                                       | Outdoor sports (w/o golf)             |                                      |
|-------------------------------------|--|---------------------------------------|------|---------------------------------------|---------------------------------------|------------------------|--|--|--|---------------------------------------|---------------------------------------|---------------------------------------|---------------------------------------|---------------------------------------|--------------------------------------|
| <i>Standard (ha per 1,000 popn)</i> | 4.424                                  | 0.99                                  |      | 1.33                                  |                                       | 0.026                  |  | 0.018                                  |  | 0.56                                  |                                       | 0.15                                  |                                       | 1.35                                  |                                      |
| Bilston Analysis Area               | <span style="color:green">5.641</span> | 0.99                                  | 0.00 | 2.89                                  | <span style="color:green">1.56</span> | 0.028                  | <span style="color:green">0.002</span> | 0.028                                  | <span style="color:green">0.010</span> | 0.66                                  | <span style="color:green">0.10</span> | 0.015                                 | <span style="color:red">-0.135</span> | 1.03                                  | <span style="color:red">-0.35</span> |
| <b>Wolverhampton</b>                | <b>4.945</b>                           | <span style="color:green">0.08</span> |      | <span style="color:green">0.27</span> |                                       | <b>0.00</b>            |  | <span style="color:green">0.005</span> |  | <span style="color:green">0.11</span> |                                       | <span style="color:red">-0.044</span> |                                       | <span style="color:green">0.10</span> |                                      |

\* No standards have been set for Cemeteries & Churchyards and Green Corridors

# CITY OF WOLVERHAMPTON COUNCIL

## OPEN SPACE STRATEGY AND ACTION PLAN UPDATE

| Indicative Cost<br>(funding sources)   | Project (Indicative Timing)   | Open Space Strategy<br>Rationale   |
|--|---|--|
| <p><b>Parks</b></p> <p>The Bilston Analysis Area has a number of District Parks serving a wide area, which are known for their distinctive character and could benefit from improvements. However, some areas have a lack of Neighbourhood Parks to meet local needs and there are three areas which are a priority for creation of new Parks. The first area is to the south of Bilston Town Centre which will be addressed through the creation of a new Neighbourhood Park as part of the Bilston Urban Village development. The second area is in Ettingshall, where a new Neighbourhood Park will be provided as part of the Ward Street Masterplan development. The third area is in The Lunt, where there is no potential to create new open space, but there is potential to improve Alexander Metals Open Space to provide a Pocket Park, subject to housing development on part of the site.</p> |   |  |
|  | <p><b>East Park Refurbishment – COMPLETED 2015</b></p> <p><i>Major programme of improvements, including installation of a fitness trail, a natural play area and a multi-use games area, refurbishment of the lodge and major restoration work to the clock tower, terrace, bandstand and main entrances to the park.</i></p>   | <p><i>East Park is the main District Park serving the Bilston Area and is locally listed.</i></p>  |
| <p>c £100,000<br/>(potential developer contributions)</p>  | <p><b>Hickman Park (2016-18)</b></p> <p>Investment in existing play and recreation facilities to maintain and increase play value.</p>  | <p>Hickman Park is the District Park serving the north of Bilston, where there is poor access to play facilities. Existing play facilities are outdated.</p>           |
| <p>c £1.5 million<br/>(£1.25 million Local Growth Fund;<br/>c. £250,000 potential developer contributions)</p>   | <p><b>Bilston Park (2016-18) – elements included within the capital programme</b></p> <p>To provide a large new Park at the heart of the Bilston Urban Village development, which will form part of a network of natural greenspace across the site, providing sustainable links to Bilston Town Centre, the Bradley Arm Canal and Bradley. The Park will be approx. 7 ha and have a variety of functions. Works will include creation of play facilities and community gardens, improvements to natural areas and the existing pool and new pathways. Long-term maintenance of site to be considered. Site preparation, woodland management and access works are being funded from the Bilston Urban Village Advanced Works Programme.</p> | <p>Required to serve the needs of new residents and visitors to the Town Centre and to provide a quality development which works within existing site constraints.</p> |
| <p>c £1.0 million<br/>(developer to provide)</p>   | <p><b>Ward Street Park (2016-18)</b></p> <p>Provide a new Park as part of the Ward Street Masterplan development, through reconfiguring and improving existing open space, to include a play area, multi-use games area and sustainable drainage features.</p>  | <p>Required to serve the needs of new and existing residents. Secured through development, which is currently under construction.</p>                                  |

## CITY OF WOLVERHAMPTON COUNCIL OPEN SPACE STRATEGY AND ACTION PLAN UPDATE

| Indicative Cost (funding sources)   | Project (Indicative Timing)  | Open Space Strategy Rationale   |
|---|--|---|
| n/k<br>(potential developer contributions)  | <b>Alexander Metals Open Space (2020-26)</b><br>Improvements to the privately-owned Alexander Metals Open Space, located in The Lunt area, and the adjoining greenway alongside the Black Country Route. To be funded through housing development on part of the site, which will also improve over-looking / security, as set out in the adopted Bilston Corridor Area Action Plan. Development will be subject to ecological survey and mitigation for loss of nature conservation value. Long term maintenance of the site to be secured. | The Lunt area has poor access to parks / park facilities and Alexander Metals Open Space is the only sizeable area which could perform this role. |
| <b>Outdoor Sports</b><br>There is a deficiency in the quantity of outdoor sports provision in the area, which will increase by 2026 due to population growth. The Playing Pitch Strategy and Action Plan (2015) concludes that there are sufficient playing pitches across the area to meet current needs and projected future shortfalls in smaller youth and mini pitches could be met by making maximum use of community use football pitches in the area which have spare capacity. |  |   |
| £50,000 to £100,000<br>(potential developer contributions)  | <b>Prouds Lane Playing Fields (2016-18)</b><br>Explore options to maximise use of the underplayed pitches on the site, including transfer of youth teams currently playing on adult pitches. Look at potential to improve quality of pitches and thereby increase capacity to accommodate more matches.  | To address identified poor quality / overplayed pitches, in line with the Playing Pitch Strategy and Action Plan                                  |
| £50,000 to £100,000<br>(potential developer contributions)  | <b>East Park (2017-19)</b><br>Improve quality of tennis courts to better accommodate recreational use  | To address tennis court quality issues identified in the Playing Pitch Strategy and Action Plan   |
| Small amount  | <b>Holy Rosary Catholic School / Stowlawn Primary School (2016-19)</b><br>Explore options to maximise community use of the youth and mini pitches at these schools   | To address projected future shortfalls in smaller youth and mini pitches identified in the Playing Pitch Strategy & Action Plan                   |
| <b>Natural and semi-natural greenspace</b><br>There is a large quantity of natural and semi-natural greenspace in Bilston, some of which is of SLINC / SINC value. However, the quality, access and safety of these spaces is sometimes poor.   |  |   |
| n/k<br>(developer to provide)   | <b>Bradley Lane Site of Local Importance for Nature Conservation (2016-18)</b><br>Improve and take into Council ownership.   | Improvements secured through adjoining Duke's Park housing development, which is under construction.  |

## CITY OF WOLVERHAMPTON COUNCIL OPEN SPACE STRATEGY AND ACTION PLAN UPDATE

| Indicative Cost<br>(funding sources)  | Project (Indicative Timing)  | Open Space Strategy<br>Rationale  |
|---|--|---|
| c £1.0 million<br>(developer to provide)  | <b>Ward Street Railway Cutting (2017-26)</b><br>Part fill and re-landscape Dudley – Priestfield Disused Railway (North) SLINC / greenway and loss of Albany Crescent Open Space for housing / reconfigured school playing fields as part of Ward Street Masterplan development. Developer to part fill and carry out landscaping works.            | Sufficient quantity of amenity open space in Bilston area / small area of low value. Part of overall open space improvements to be delivered through Ward Street development. |
| n/k   | <b>Stowheath Lane Open Space (feasibility work: 2016-17)</b><br>Consider potential for small part of to be developed subject to quality improvements to remainder of site.   | Sufficient quantity of amenity open space in Bilston area. Large site of average quality / high value.  |
| Included in Bilston Park above  | <b>Bilston Urban Village Natural Areas (2016-18 - see also Bilston Park above)</b><br>Consider potential to improve quality of natural areas, subject to ecological survey, to form part of new Park / greenway network.   | Average quality / high value  |
| c £10.0 million<br>(potentially: external funding; developer contributions; Council budget) | <b>Former Bradley Arm Canal (2020-26)</b><br>Protect the line of the former Bradley Arm Canal (Great Bridge Open Space and Stirling Road Open Space), which currently acts as a greenway, and look to reinstate the canal itself as a link between the Birmingham Mainline and Walsall Canals, or canal features, as and when opportunities arise. | Average quality open space with potential to promote regeneration through creation of new environmental infrastructure  |
| £50,000 to £200,000<br>(potentially: Council budget; developer contributions)               | <b>Ladymoor Pool Open Space (2016-20)</b><br>Look at potential to improve the Site of Importance for Nature Conservation (SINC), to serve existing and new residents and as part of the ecological network including Bilston Urban Village to the north. To include investment in Ladymoor Pool.   | Key canalside natural greenspace, part-owned by the Canal and River Trust, adjoining Bilston Urban Village  |
| £15,000<br>(secured developer contributions)  | <b>Rocket Pool (2016-20)</b><br>Improvements to periphery e.g. fishing points, fencing   | Locally important natural space and angling opportunity   |
| Small amount  | <b>Ecological Surveys (on-going)</b><br>Programme of surveys on key sites to ensure habitats are identified, protected and well managed.   | Large quantity of natural greenspace in Bilston but quality is often not good.  |

## CITY OF WOLVERHAMPTON COUNCIL OPEN SPACE STRATEGY AND ACTION PLAN UPDATE

| Indicative Cost<br>(funding sources)  | Project (Indicative Timing)   | Open Space Strategy<br>Rationale   |
|---|---|--|
| <b>Provision for children and young people</b><br>The key areas of deficiency for children's facilities are to the north of this Analysis Area. Play areas provided in new parks created through development may address access issues for many residents. Provision of further play facilities to address gaps would also ensure that residents are able to access facilities. |   |  |
| Included under other actions  | <b>Improvements to Hickman Park play provision (2016-18 - see above)</b>  | Poor access to play provision identified to the north of the Bilston Area.   |
| Included under other actions  | <b>Play Provision on New Housing Developments (on-going)</b><br>Creation of new play provision on major housing sites, including Bilston Urban Village and Ward Street.   | New play provision will be required to serve the needs of new residents on larger housing developments.  |
| <b>Amenity greenspace</b><br>There is about the right amount of amenity greenspace across Bilston, but quality can be poor.   |   |  |
| n/k   | <b>Bilston Town Centre (2018-20)</b><br>Various improvements to open spaces in Bilston Town Centre, including God's Acre and Churchyards, and to the public realm. To build on improvements carried out to St Leonard's Churchyard. | It is important that greenspace / public realm in and around Bilston Town Centre is improved, to reinforce the benefits provided by regeneration |
| <b>Allotments</b><br>There are significant parts of Bilston which do not have good access to allotments, and existing allotments are full.  |   |  |
| To be provided through development and self-managed   | <b>Allotment Opportunities (on-going)</b><br>Subject to monitoring of local demand and ground condition constraints, explore opportunities to provide self-managed community allotment sites (e.g. at Bilston Urban Village).       | Gap in provision identified for Bilston area, however currently low demand.  |
| <b>Total works with costs known or estimated</b>  |   |  |
| £13.8 - £14.0 million (where known), including £2.0 million secured developer contributions and £1.25 million secured Local Growth Fund   |   |  |

# CITY OF WOLVERHAMPTON COUNCIL

## OPEN SPACE STRATEGY AND ACTION PLAN UPDATE

### Central and South

#### Total ha's Open Space for the Central & South Analysis Area and Wolverhampton

| Area                 | Total open space (ha) | Current population (2010) | Parks        | Natural      | Provision for children | Provision for young people | Amenity      | Allotments  | Outdoor sports (w/o golf) | Cemeteries and Church yards | Green Corridor |
|----------------------|-----------------------|---------------------------|--------------|--------------|------------------------|----------------------------|--------------|-------------|---------------------------|-----------------------------|----------------|
| Central & South      | 250.269               | 63,845                    | 56.1         | 75.8         | 1.8                    | 0.8                        | 26.7         | 10.2        | 70.0                      | 7.9                         | -              |
| <b>Wolverhampton</b> | <b>1129.3</b>         | <b>239,354</b>            | <b>238.1</b> | <b>319.6</b> | <b>6.2</b>             | <b>4.3</b>                 | <b>134.1</b> | <b>35.4</b> | <b>322.4</b>              | <b>62.8</b>                 | <b>5.1</b>     |

#### Comparison with Wolverhampton Standards for Each Type of Open Space (ha per 1,000 popn *below/above standard*)\*

|                                     | Total        | Parks       |              | Natural     |              | Provision for children |              | Provision for young people |               | Amenity     |              | Allotments    |              | Outdoor sports (w/o golf) |              |
|-------------------------------------|--------------|-------------|--------------|-------------|--------------|------------------------|--------------|----------------------------|---------------|-------------|--------------|---------------|--------------|---------------------------|--------------|
| <i>Standard (ha per 1,000 popn)</i> | 4.424        | 0.99        |              | 1.33        |              | 0.026                  |              | 0.018                      |               | 0.56        |              | 0.15          |              | 1.35                      |              |
| Central & South Analysis Area       | <b>3.92</b>  | 0.88        | <b>-0.11</b> | 1.19        | <b>-0.14</b> | 0.028                  | <b>0.002</b> | 0.012                      | <b>-0.006</b> | 0.42        | <b>-0.14</b> | 0.159         | <b>0.009</b> | 1.10                      | <b>-0.25</b> |
| <b>Wolverhampton</b>                | <b>4.945</b> | <b>0.08</b> |              | <b>0.27</b> |              | <b>0.00</b>            |              | <b>0.005</b>               |               | <b>0.11</b> |              | <b>-0.044</b> |              | <b>0.10</b>               |              |

## CITY OF WOLVERHAMPTON COUNCIL OPEN SPACE STRATEGY AND ACTION PLAN UPDATE

| Indicative Cost (funding sources)  | Project (Indicative Timing)  | Reasons why this is a priority  |
|--|--|---|
| <p><b>Parks</b></p> <p>West Park (the “City” Park) falls within this Analysis Area and, due to its size, the Area is above standard for District Parks. However, there is a lack of Neighbourhood Parks to serve the rest of the area. Increasing the range of functions provided by larger amenity greenspace and natural open spaces, such as Taylor Road, can help address gaps in provision. There are plans for housing growth and regeneration in the City Centre, which already has a large student population. The City Centre has little open space but is served by a network of canals which link to open spaces further afield, and by the new Youth Zone.</p> |  |   |
| <p>c. £450,000 potential developer contributions - £10,000 secured)</p>  | <p><b>West Park (2016-18) – elements included within the capital programme</b><br/>Improvements to create City Park standard play facilities.</p>  | <p>To provide high quality play facilities to serve the City.</p>   |
| <p>£177,000 (potential developer contributions - £66,000 secured)</p>  | <p><b>Taylor Road Open Space (2016-18) – elements included within the capital programme</b><br/>Continue improvements to create a Neighbourhood Park to serve the area east of Birmingham New Road, with emphasis on nature conservation, pathway network and access. BMX track provided 2014/15.</p>                        | <p>To provide a quality Neighbourhood Park to serve the area east of Birmingham New Road.</p>   |
| <p>c £282,000 (potential developer contributions - £211,000 secured)</p>   | <p><b>City Centre Canal Network / Hay Basin Open Space (2016-18)</b><br/>Continue improvements to the City Centre canal network linked to Canalside Quarter regeneration as set out in the City Centre Area Action Plan. Current phase will deliver a Managing Short Trips project to create better access to the canal.</p> | <p>To provide a quality open space resource serving the City Centre and providing a focus for canal-based recreation as part of a wider greenway network.</p> |
| <p>£170,000 (potential developer contributions - £102,000 secured)</p>   | <p><b>All Saints Neighbourhood Park (2015-18)</b><br/>First phase to rationalise / improve play provision completed 2015. Further refurbishment / upgrade required.</p>  | <p>To provide a quality pocket Park serving an area which is a focus for housing renewal.</p>   |

## CITY OF WOLVERHAMPTON COUNCIL OPEN SPACE STRATEGY AND ACTION PLAN UPDATE

| Indicative Cost (funding sources)  | Project (Indicative Timing)  | Reasons why this is a priority  |
|--|--|---|
| £120,000<br>(potential Fmr St Luke's School developer contribution)  | <b>Graiseley Recreation Ground (2016-18)</b><br>Play, recreation and access improvements to support regeneration as set out in City Centre Area Action Plan.   | To provide a quality Park serving an area which is a focus for regeneration.  |
| <b>Outdoor Sports</b><br>There is a deficiency in the quantity of outdoor sports provision in the area, which will increase by 2026 due to population growth. The Playing Pitch Strategy and Action Plan (2015) concludes that there are sufficient football pitches across the area to meet current and future needs, and recommends improvements to pitch quality, transfer of youth teams to youth pitches and exploring potential sites to provide a 3G artificial grass pitch. It is also recommended to improve pitch and changing facility quality at Newbridge Playing fields and provide security of tenure to address the poor quality of cricket pitch provision. |  |   |
| c £250,000<br>(£200,000 secured for loss of Thompson Av Open Space)  | <b>Rooker Avenue Sports Ground (2016-20)</b><br>Improve changing facilities and fencing to allow the Council-owned sports ground with one senior football pitch to be brought back into use.   | The changing rooms are now derelict, meaning that the pitch cannot currently be used, resulting in a loss of adult pitch provision. |
| n/k  | <b>Fmr Parkfield High School (2016-18)</b><br>Look at potential to maximise community use of playing fields and sports facilities.   | The site provides one youth and one adult pitch which could be used to address local deficiencies.                                  |
| n/k<br>(potential developer contribution)  | <b>St Luke's Primary School (2016-18)</b><br>Create new community use youth 11v11 pitch on land adjoining School to replace pitch to be lost at former St Luke's Junior School, and promote community use of both youth pitches at the School.                           | Existing youth pitch available for community use but unused   |
| c £185,000<br>(secured developer contributions)  | <b>Newbridge Playing Fields (2016-18)</b><br>The Council is working in partnership with Whitmore Reans Cricket Club to use developer contributions to redevelop the derelict pavilion and provide cricket and football clubs with changing facilities and meeting space. | Identified in the Playing Pitch Strategy as a key site which requires an increase in quality to accommodate more matches.           |



## CITY OF WOLVERHAMPTON COUNCIL OPEN SPACE STRATEGY AND ACTION PLAN UPDATE

| Indicative Cost (funding sources)   | Project (Indicative Timing)  | Reasons why this is a priority  |
|---|--|---|
| <p><b>Natural and semi-natural greenspace</b><br/>There is little natural greenspace in the north of the Area, where housing growth is planned in the City Centre and areas to the south, and some existing areas are of poor quality. There is little potential to provide new open space through development in this area, and so opportunities to improve the quality of existing sites or to provide more natural habitat in existing open spaces should be explored.</p> |  |   |
| n/k   | <p><b>Taylor Road Open Space SLINC (2016-18)</b><br/>Improve quality and value for wildlife and access. Investigate potential for NIA funding.</p>   | The site is a Neighbourhood Park with potential to improve nature conservation value. |
| n/k   | <p><b>Quality improvements to Amenity Green Space (2016-21)</b><br/>Explore potential to improve quality and create habitat on low quality amenity green spaces, or if not possible consider potential for disposal e.g. Foster Avenue</p>                                 | To address poor quality of some amenity green spaces                                  |
| Small amount  | <p><b>Ecological Surveys (2016-18)</b><br/>Programme of surveys to recognise nature conservation value of some amenity greenspaces and amend management accordingly.</p>   | Appropriate management may increase quality.  |
| <p><b>Provision for children and young people</b><br/>In general standards are met, although there is a gap in access to children's play provision to the south of the analysis area, and the quantity (area in ha) of provision for young people is below standard.</p>  |  |   |
| £80,000 (potential developer contributions)   | <p><b>Muchall Park (2016-18)</b><br/>Refurbishment of formal play area</p>   | To maintain the quality of local play provision                                       |
| £80,000 (potential developer contributions)   | <p><b>Peace Green (2016-18)</b><br/>Renovation of existing play area</p>   | To maintain the quality of local play provision                                       |
| c £100,000 (disposal / potential developer contributions)   | <p><b>Merridale Street Open Space (2016-18)</b><br/>Upgrade existing play facilities and look at potential for healthy lifestyle improvements, to be funded through disposal of nearby Laburnum Street former Play Area site and/or potential developer contributions.</p> | Regeneration area with below standard quantity of open space and play facilities.     |

## CITY OF WOLVERHAMPTON COUNCIL OPEN SPACE STRATEGY AND ACTION PLAN UPDATE

| Indicative Cost (funding sources)   | Project (Indicative Timing)   | Reasons why this is a priority   |
|---|---|--|
|   | <p><b>City Centre Youth Zone – COMPLETED 2016</b><br/> <i>Creation of a new youth centre providing indoor and outdoor sports facilities, including two multi-use games areas and an outdoor recreation area. This facility will complement the existing Penn Road Island skate park nearby.</i></p> | <p><i>To meet the sport and play needs of young people visiting and living within / close to the City Centre</i></p> |
| <p><b>Amenity greenspace</b><br/>           The Analysis Area has good access to amenity greenspace, although there is a shortfall against quantity standards of 0.14 ha per 1,000 population and a number of sites are of a poor quality. The priority should be to first address qualitative issues at sites. An approach may be to consolidate sites in order to provide fewer but better quality levels of provision. Long term any opportunities to provide new amenity greenspace should be explored to meet quantity shortfalls.</p> |   |  |
| n/k (potential developer contributions)   | <p><b>Rough Hills Open Space (2016-18)</b><br/>           Look to improve quality.</p>  | Site scores low for quality.   |
| <p><b>Total</b></p>   |   |  |
| <p>£1.9 million (where known), including £570,000 secured developer contributions</p>   |   |  |

# CITY OF WOLVERHAMPTON COUNCIL OPEN SPACE STRATEGY AND ACTION PLAN UPDATE

## North

### *Total ha's Open Space for the North Analysis Area and Wolverhampton*

| Area                 | Total open space (ha) | Current population (2010) | Parks        | Natural      | Provision for children | Provision for young people | Amenity      | Allotments  | Outdoor sports (w/o golf) | Cemeteries and Church yards | Green Corridor |
|----------------------|-----------------------|---------------------------|--------------|--------------|------------------------|----------------------------|--------------|-------------|---------------------------|-----------------------------|----------------|
| North                | 223.207               | 37,278                    | 56.2         | 48.0         | 1.1                    | 0.6                        | 26.9         | 5.0         | 68.9                      | 15.0                        | 1.3            |
| <b>Wolverhampton</b> | <b>1129.3</b>         | <b>239,354</b>            | <b>238.1</b> | <b>319.6</b> | <b>6.2</b>             | <b>4.3</b>                 | <b>134.1</b> | <b>35.4</b> | <b>322.4</b>              | <b>62.8</b>                 | <b>5.1</b>     |

### *Comparison with Wolverhampton Standards for Each Type of Open Space (ha per 1,000 popn below/above standard)\**

|                              | Total        | Parks       |      | Natural     |       | Provision for children |       | Provision for young people |        | Amenity     |      | Allotments    |        | Outdoor sports (w/o golf) |      |
|------------------------------|--------------|-------------|------|-------------|-------|------------------------|-------|----------------------------|--------|-------------|------|---------------|--------|---------------------------|------|
| Standard (ha per 1,000 popn) | 4.424        | 0.99        |      | 1.33        |       | 0.026                  |       | 0.018                      |        | 0.56        |      | 0.15          |        | 1.35                      |      |
| North Analysis Area          | 5.99         | 1.40        | 0.41 | 1.29        | -0.04 | 0.029                  | 0.003 | 0.016                      | -0.002 | 0.72        | 0.16 | 0.135         | -0.015 | 1.85                      | 0.50 |
| <b>Wolverhampton</b>         | <b>4.945</b> | <b>0.08</b> |      | <b>0.27</b> |       | <b>0.00</b>            |       | <b>0.005</b>               |        | <b>0.11</b> |      | <b>-0.044</b> |        | <b>0.10</b>               |      |

| Indicative Cost (funding sources)  | Project (Indicative Timing)   | Reasons why this is a priority  |
|--|---|---|
| <b>Parks</b>   |   |   |
| Although there is a large quantity of parkland in the area, there are a number of parks and amenity greenspaces in the area which are of an average quality. There is a gap in park provision in the Oxley area, which is being addressed through provision of a new, high quality Neighbourhood Park as part of the Goodyear housing development. |   |   |
| c. £1.5 million (developer to provide)   | <b>Goodyear Neighbourhood Park (2016-18)</b><br>Provide a new Park as part of the Goodyear housing development, to include a play area, multi-use games area and sustainable drainage features. | To address a gap in Parks provision in the Oxley area and to meet the needs of new residents. |

## CITY OF WOLVERHAMPTON COUNCIL OPEN SPACE STRATEGY AND ACTION PLAN UPDATE

|   |   |  |
|---|---|--|
| n/k   | <b>Bushbury and Low Hill Open Spaces (2017-21)</b><br>Explore potential to improve amenity greenspace in the Bushbury and Low Hill area, including infrastructure and access.   | Poor quality of amenity open space in the Bushbury and Low Hill area   |
| <b>Outdoor Sports</b><br>There is a large amount of outdoor sports space in the area, and the need to improve cricket pitch provision to accommodate future increases in participation has been partly met through improving changing facilities at Fordhouses Cricket Club. However, there is a current shortfall of junior and senior football pitches which will increase in the future. The area will benefit from installation of a £1M new community use artificial grass pitch at Our Lady and St Chad's Catholic School and Sports College, and will have access to a new multi-pitch site at Barnhurst Lane from 2015. |   |  |
| c. £2.7 million (including £450k Football Foundation funding)   | <b>Barnhurst Lane (2015-17) – elements included within the capital programme</b><br>Creation of a new multi-pitch site to serve the north of the City on land in South Staffordshire, adjoining Aldersley High School. To include up to 12 mini, junior and senior pitches, a running and walking track and changing rooms on Aldersley School site (commenced 2015). Monitor use of pitches once complete. | To mitigate for loss of playing fields through Building Schools for the Future projects and to create new pitches to meet shortfalls in the north of the City. |
| n/k   | <b>Goodyear Sports and Social Club (2016-17)</b><br>Improvements to changing rooms completed in 2015. Explore options to maximise use of cricket pitch.   | Cricket pitch available to community but unused.   |
|   | <b>Our Lady &amp; St Chad Catholic School and Sports College - COMPLETED 2015</b><br><i>Creation of a new 3G artificial grass pitch to serve a 10 mile radius of the school site. The pitch will accommodate football and touch rugby and replaces the artificial grass pitch lost due to the disposal of the Jennie Lee Centre.</i>  | <i>To mitigate for the loss of an artificial grass pitch at the Jennie Lee Centre.</i>   |
| <b>Natural and semi-natural greenspace</b><br>There is generally good access to natural greenspace, but the majority of sites are of an average to poor quality. The area benefits from good access to the City's only Country Park - Northcote Farm and Country Park is a 35 ha site located on the urban/rural fringe with good public transport access and acting as a large visitor draw for the area, with capacity to expand its attractions. The area also has good access to Smestow Valley Local Nature Reserve, in the Tettenhall Analysis Area, which is programmed for improvements.                                |   |  |
| n/k   | <b>Northcote Farm Country Park (2016-17)</b><br>A sensory garden was created in 2014/15. A countryside feasibility study is currently being undertaken to look at potential for further investment to improve this visitor attraction.  | To increase access to good quality natural greenspace  |
| n/k (potential developer contributions)   | <b>Rakegate Wood (2016-18)</b><br>Management plan / tree survey completed 2014/15. Where opportunities arise, secure developer contributions for safety / tree work to allow public access.   | To increase access to good quality natural greenspace and promote community involvement  |

## CITY OF WOLVERHAMPTON COUNCIL OPEN SPACE STRATEGY AND ACTION PLAN UPDATE

| <b>Provision for children and young people</b>   |   |  |
|--|---|--|
| There is a gap in children's play provision in the north of the area, which is well served by amenity greenspace which could accommodate new facilities, and also a shortfall in quantity of young people's provision. |   |  |
| £100,000<br>(potential developer contributions - £105,000 secured for Northwood Park or Bushbury Recreation Ground)  | <b>Bushbury Recreation Ground (2016-18)</b><br>Complete play area refurbishment.  |  |
| £100,000<br>(potential developer contributions – see above)  | <b>Northwood Park (2016-18)</b><br>Complete play area refurbishment.  |  |
| c £220,000<br>(potential developer contributions)  | <b>Children's play facilities to serve the north of the area (2016-18)</b><br>Refurbish play area at Howland Close, improve Renton Road open space and play facilities, and rationalise remaining play provision in the area. | To address a gap in children's play provision. |
| <b>Total</b>   |   |  |
| £4.6 million (where known), including £1.6 million secured developer contributions   |   |  |

# CITY OF WOLVERHAMPTON COUNCIL OPEN SPACE STRATEGY AND ACTION PLAN UPDATE

## Tettenhall

### Total ha's Open Space for the Tettenhall Analysis Area and Wolverhampton

| Area                     | Total open space (ha) | Current population (2010) | Parks        | Natural      | Provision for children | Provision for young people | Amenity      | Allotments  | Outdoor sports (w/o golf) | Cemeteries & Church yards |
|--------------------------|-----------------------|---------------------------|--------------|--------------|------------------------|----------------------------|--------------|-------------|---------------------------|---------------------------|
| Tettenhall Analysis Area | 234.2                 | 50,334                    | 41.3         | 47.8182      | 1.1                    | 0.3                        | 22.3         | 14.6        | 80.9                      | 25.9                      |
| <b>Wolverhampton</b>     | <b>1129.3</b>         | <b>239,350</b>            | <b>238.1</b> | <b>319.6</b> | <b>6.2</b>             | <b>4.3</b>                 | <b>134.1</b> | <b>35.4</b> | <b>322.4</b>              | <b>62.8</b>               |

### Comparison with Wolverhampton Standards for Each Type of Open Space (ha per 1,000 popn *below/above standard*)\*

|                                     | Total        | Parks       |       | Natural     |       | Provision for children |        | Provision for young people |        | Amenity     |       | Allotments    |       | Outdoor sports (w/o golf) |      |
|-------------------------------------|--------------|-------------|-------|-------------|-------|------------------------|--------|----------------------------|--------|-------------|-------|---------------|-------|---------------------------|------|
| <i>Standard (ha per 1,000 popn)</i> | 4.424        | 0.99        |       | 1.33        |       | 0.026                  |        | 0.018                      |        | 0.56        |       | 0.15          |       | 1.35                      |      |
| Tettenhall Analysis Area            | 4.651        | 0.82        | -0.17 | 0.95        | -0.38 | 0.021                  | -0.005 | 0.006                      | -0.012 | 0.44        | -0.12 | 0.289         | 0.139 | 1.61                      | 0.26 |
| <b>Wolverhampton</b>                | <b>4.945</b> | <b>0.08</b> |       | <b>0.27</b> |       | <b>0.00</b>            |        | <b>0.005</b>               |        | <b>0.11</b> |       | <b>-0.044</b> |       | <b>0.10</b>               |      |

\* No standards have been set for Cemeteries & Churchyards and Green Corridors

Tettenhall benefits from good access to the only Local Nature Reserve (LNR) in Wolverhampton, Smestow Valley, which acts as a green lung extending throughout the area with a range of functions. A Management Plan is in place for the LNR to guide future improvements. The Compton, Wightwick and Castlecroft areas do not have access to a Park, and also have poor access to amenity open space and provision for children and young people. Tettenhall Upper Green / Lower Green and Penk Rise do not provide the full range of facilities which would be expected for Neighbourhood Parks. There are few opportunities to provide new open space in the area, however disposal of small areas of surplus open space and new housing developments have the potential to fund improvements and provide new facilities. A Neighbourhood Plan has been adopted for the Tettenhall area, which incorporates proposals for protection and improvement of open space in the area. The table below provides an indication of the level of priority attached by the Neighbourhood Plan Group to actions falling within their area (1 = top priority).

## CITY OF WOLVERHAMPTON COUNCIL OPEN SPACE STRATEGY AND ACTION PLAN UPDATE

The area benefits from access to Aldersley Leisure Village, with a range of indoor and outdoor sports facilities including two recently resurfaced artificial grass pitches suitable for hockey. However, there is a lack of cricket and rugby pitches in the area and a lack of junior football pitches, meaning that junior clubs have to play on senior pitches. New junior pitches can be created by converting senior pitches and by looking to open up school pitches for community use. There is a need to protect cricket sites and increase the availability of non-turf wickets.

| Indicative Cost (funding sources)  | Project (Indicative Timing) – Neighbourhood Plan Group priority  | Reasons why this is a priority  |
|--|--|---|
| <b>Parks</b>   |  |   |
|  | <b>Claregate Playing Fields – COMPLETED 2014</b><br><i>Invest in fitness trail, following successful bid to “Fields in Trust”.</i>   | <i>To provide a quality Park serving the Tettenhall area</i>                          |
| c £80,000 (potential developer contributions - £180,000 secured for open space in the Tettenhall area) | <b>Tettenhall Upper Green (2016-18) – 1</b><br>Improve pathways, access and landscaping and provide a natural area and information displays, in consultation with the local community and all in a manner which respects their local character and historic setting, so that the Upper Green can act as a Neighbourhood Park to serve the Tettenhall area. | To provide a quality Park serving the Tettenhall area                                 |
| c £100,000 to £200,000 (potential developer contributions – see above)                                 | <b>Penk Rise (2016-18) – 1</b><br>Improve the Neighbourhood Park at Penk Rise for different age groups, including refurbishment of formal play area (c. £100k) and fitness facilities. Secured Local Green Space status for the site to protect it in the long term, through Tettenhall Neighbourhood Plan process, in 2014.                               | To provide a quality Park to serve the Tettenhall Wood area                           |
| £200,000 (potential developer contributions – see above)   | <b>Henwood Road Open Space (2016-18) – 4</b><br>Develop a Pocket Park at Henwood Road Open Space, including provision of a play area and multi-use games area, to be funded through developer contributions including necessary maintenance costs. Tettenhall Neighbourhood Plan proposal.   | To address the lack of a Park / play facilities to serve the Compton / Wightwick area |

## CITY OF WOLVERHAMPTON COUNCIL OPEN SPACE STRATEGY AND ACTION PLAN UPDATE

| Indicative Cost (funding sources)  | Project (Indicative Timing) – Neighbourhood Plan Group priority  | Reasons why this is a priority   |
|--|--|--|
| £100,000<br>(secured developer contributions)  | <b>Windsor Avenue Open Space (2016-18)</b><br>Improve the Neighbourhood Park at Windsor Avenue, by modernising play facilities.  | To provide a quality park  |
| <b>Outdoor Sports</b><br>There is a surplus of adult football pitches and a current and future shortfall of youth pitches. New youth pitches can be created by converting adult pitches and looking to open up school pitches for community use. There is a need to protect and maximise use of cricket sites, including Claregate Playing Fields. Two Artificial Grass Pitches (AGPs) used for hockey have recently been resurfaced at Aldersley Leisure Village. The relocation of Wolves Academy from Aldersley Leisure Village to Wolves training ground at Compton, including a £700k upgrading of pitches, and transfer of use of the dome at Aldersley Leisure Village to Wolves Community Trust has also been recently completed. However, there is a need to identify a potential site to provide an additional 3G artificial grass pitch to serve the Tettenhall area. |  |  |
|  | <b>The Kings School – COMPLETED 2014</b><br><i>Provision of additional senior football pitch and community use of outdoor sports facilities provided as part of redevelopment under Building Schools for the Future (BSF) programme.</i>   | <i>Wolverhampton Sport Development and Investment Strategy identifies the need to maximise community use of school sports facilities</i>                 |
| <b>Natural and semi-natural greenspace</b>   |  |  |
| c £200,000<br>(potential developer contributions - £86,000 secured; potential ERDF funding)  | <b>Smestow Valley Local Nature Reserve (2016-18) – 3</b><br>Improve quality and value for wildlife and visitors, including access routes / pathways, stiles and fencing, with reference to Management Plan. Look at potential to expand to cover open part of former Wolverhampton Environment Centre site (see below).  | The site is the only Local Nature Reserve in Wolverhampton and also functions as a greenway network and amenity open space for local residents.          |
|  | <b>De-culverting of Penk Rise – COMPLETED 2014</b><br><i>Project to open up Penk Rise where it currently passes in a culvert beneath Penk Rise Open Space, to include some re-profiling of the open space. This will assist natural drainage and promote biodiversity.</i><br><i>Project funded and managed by the Environment Agency, Birmingham and Black Country Wildlife Trust and Severn Trent.</i> | <i>To improve sustainable drainage and biodiversity, as promoted in the Wolverhampton Surface Water Management Plan and Black Country Core Strategy.</i> |



## CITY OF WOLVERHAMPTON COUNCIL OPEN SPACE STRATEGY AND ACTION PLAN UPDATE

| Indicative Cost (funding sources)   | Project (Indicative Timing) – Neighbourhood Plan Group priority   | Reasons why this is a priority  |
|---|---|---|
| Fully funded by partners  | <b>De-culverting of Smestow Brook (2016-18)</b><br>Open up part of the Smestow Brook where it passes in a culvert beneath Smestow Valley LNR, to include some re-profiling of the open space, in order to promote biodiversity. Project funded and managed by the Environment Agency, Birmingham and Black Country Wildlife Trust and Severn Trent. | To improve sustainable drainage and biodiversity, as promoted in the Wolverhampton Surface Water Management Plan and Black Country Core Strategy. |
| Small amount  | <b>Ecological Surveys (on-going)</b><br>Programme of surveys to recognise nature conservation value of some amenity greenspaces and amend management accordingly. Former Wolverhampton Environment Centre and Woodlands Walk surveys completed in 2015.   | Appropriate management may increase quality.  |
| n/k   | <b>Quality improvements to Amenity Green Space (2016-21)</b><br>Explore potential to improve quality and create habitat on low quality amenity green spaces, or if not possible consider potential for disposal e.g. Reedham Gardens  | To address poor quality of some amenity green spaces  |
| c. £200,000 (potential developer contributions)                                       | <b>Former Wolverhampton Environment Centre (2016-20) – 5</b><br>Investigate potential to integrate woodlands and pool into Smestow Valley LNR and look at potential to expand self-managed community allotment provision in line with Tettenhall Neighbourhood Plan.  | Lack of amenity greenspace in the Castlecroft area.   |
| <b>Provision for children and young people</b>  |   |   |
| c. £50,000 (potential developer contributions)  | <b>Kingsclere Walk (2016-18)</b><br>Replace play area equipment   | Need to maintain quality of play provision  |
| £82,000 (secured developer contribution)  | <b>Play Provision for Castlecroft (2016-18) – elements included within the capital programme</b><br>Improve play facilities at Castlecroft Avenue Play Area.  | Gap in provision for young people in the Castlecroft area   |
| <b>Total</b>  |   |   |
| £1.1 - £1.2 million (where known), including £348,000 secured developer contributions |   |   |

# CITY OF WOLVERHAMPTON COUNCIL

## OPEN SPACE STRATEGY AND ACTION PLAN UPDATE

### Wednesfield

#### *Total ha's Open Space for the Wednesfield Analysis Area and Wolverhampton*

| Area                 | Total open space (ha) | Current population (2010) | Parks        | Natural      | Provision for children | Provision for young people | Amenity      | Allotments  | Outdoor sports (w/o golf) | Cemeteries and Church yards | Green Corridor |
|----------------------|-----------------------|---------------------------|--------------|--------------|------------------------|----------------------------|--------------|-------------|---------------------------|-----------------------------|----------------|
| Wednesfield          | 176.240               | 46,310                    | 43.4         | 27.6         | 1.1                    | 1.5                        | 31.0         | 5.0         | 60.0                      | 3.8                         | 3.0            |
| <b>Wolverhampton</b> | <b>1129.3</b>         | <b>239,354</b>            | <b>238.1</b> | <b>319.6</b> | <b>6.2</b>             | <b>4.3</b>                 | <b>134.1</b> | <b>35.4</b> | <b>322.4</b>              | <b>62.8</b>                 | <b>5.1</b>     |

#### *Comparison with Wolverhampton Standards for Each Type of Open Space (ha per 1,000 popn below/above standard)\**

|                                     | Total                               | Parks                                 |                                      | Natural                               |                                      | Provision for children |                                       | Provision for young people             |  | Amenity                               |                                       | Allotments                            |   | Outdoor sports (w/o golf)             |                                      |
|-------------------------------------|-------------------------------------|---------------------------------------|--------------------------------------|---------------------------------------|--------------------------------------|------------------------|---------------------------------------|--|--|---------------------------------------|---------------------------------------|---------------------------------------|---|---------------------------------------|--------------------------------------|
| <i>Standard (ha per 1,000 popn)</i> | 4.424                               | 0.99                                  |                                      | 1.33                                  |                                      | 0.026                  |                                       | 0.018                                  |  | 0.56                                  |                                       | 0.15                                  |   | 1.35                                  |                                      |
| Wednesfield Analysis Area           | <span style="color:red">3.81</span> | 0.94                                  | <span style="color:red">-0.05</span> | 0.60                                  | <span style="color:red">-0.73</span> | 0.024                  | <span style="color:red">-0.002</span> | 0.033                                  | <span style="color:green">0.015</span> | 0.67                                  | <span style="color:green">0.11</span> | 0.108                                 | - | 1.29                                  | <span style="color:red">-0.06</span> |
| <b>Wolverhampton</b>                | <b>4.945</b>                        | <span style="color:green">0.08</span> |                                      | <span style="color:green">0.27</span> |                                      | <b>0.00</b>            |                                       | <span style="color:green">0.005</span> |  | <span style="color:green">0.11</span> |                                       | <span style="color:red">-0.044</span> |   | <span style="color:green">0.10</span> |                                      |

| Indicative Cost (funding sources)  | Project (Indicative Timing)   | Reasons why this is a priority                          |
|--|---|---|
| <b>Parks</b>   |   |   |
| There is a minor quantitative shortfall for parks, however the even distribution of District and Neighbourhood Parks means that all areas have good access to a park. Quality is average for some parks. Housing growth is planned in the Stafford Road Corridor, which will increase pressure on Fowlers Playing Fields, a District Park. Proposals in the North Analysis Area to develop a Neighbourhood Park at Tennyson Road Open Space will also benefit the north west part of the area. |   |   |
| £250,000 (potentially: developer contributions; ERDF fundg)  | <b>Fowlers Playing Fields Park (2016-26)</b><br>Improve to serve existing and new residents within the Stafford Road Corridor Area Action Plan. Improvements to include improved pedestrian and cycling access, improving links with the adjoining canal, general infrastructure, play equipment, CCTV, car parks and bridge replacement (£30k), to increase use of the Park. | To improve quality and meet the needs of new residents. |

## CITY OF WOLVERHAMPTON COUNCIL OPEN SPACE STRATEGY AND ACTION PLAN UPDATE

| Indicative Cost (funding sources)   | Project (Indicative Timing)   | Reasons why this is a priority  |
|---|---|---|
| £170,000 (potential developer contributions - £62,000 secured)  | <b>Ashmore Park (2016-18) – elements included within the capital programme</b><br>Increase quality through improving facilities on site. Community engagement underway.   | Park of average quality.<br>Area with poor access to natural green space. |
| c £140,000 (potential developer contributions - £109,000 secured)   | <b>Heath Town Park (2016-18) – elements included within the capital programme</b><br>Bungalow removed 2014, Investment in infrastructure and play facilities.   | Park of average quality.  |
| £500,000 (£415,000 secured developer contributions)   | <b>Colman Avenue Park (2015-16)</b><br>Improvements underway to create a Neighbourhood Park to serve the area, including new pitches, improvements to play facilities, environmental improvements, a path network and a trim trail.   | Park of average quality.<br>Area with poor access to natural green space. |
| <b>Outdoor Sports</b><br>There is about the right amount of outdoor sports space in the area and pitch sites are well distributed. There is a surplus of adult pitches and the shortfall of youth football pitches identified in the Playing Pitch Strategy has been addressed through new community use pitches provided at Wednesfield High School through Building Schools for the Future. A current shortfall in artificial grass pitch provision will be addressed through Provision of a new 3G AGP at Heath Park Business & Enterprise College and the Sporting Kalsa project to create a new AGP, located nearby in Walsall. Outdoor sports space and pitch provision will also be increased following completion of new pitches at Coleman Avenue Park. Fowlers Park requires improvements to maximise its ability to act as a multi-pitch site. |   |   |
|   | <b>Heath Park Business and Enterprise College Community Use Sports Facilities – COMPLETED 2016</b><br><i>Resurfacing of Artificial Grass Pitch to 3G standard provision of tennis pitches, multi-use games area and sports hall – all to be available for community use outside school hours.</i> | <i>To provide a quality AGP for community use</i>                         |
| n/k   | <b>Wednesfield Town Football Club (2016-18)</b><br>Monitor to ensure full community use of fenced pitch at Bellamy Lane Playing Fields and support future improvements to the site  |   |

## CITY OF WOLVERHAMPTON COUNCIL OPEN SPACE STRATEGY AND ACTION PLAN UPDATE

| Indicative Cost (funding sources)   | Project (Indicative Timing)  | Reasons why this is a priority  |
|---|--|---|
| Included in Coleman Avenue Park above   | <b>Colman Avenue Football Pitch Creation (2015-16)</b><br>Create two new junior football pitches.  | To address local demand for junior pitches and compensate for loss of playing field at former Wednesfield High School site. |
| <b>Natural green space</b><br>The Wednesfield Analysis Area has the greatest shortfall in the City against the quantity standard for natural green space. There are also large areas with poor access to natural green space, particularly in the centre of the area, and there are few natural green space sites in total, with only one good quality site. However, this does not take into account the presence of the Wyrley and Essington Canal running through the area, which is potentially of SINC value and could provide better access to quality natural green space. |  |   |
| c £150,000 (potential developer contributions - £60,000 secured; potential ERDF fundg)  | <b>Wyrley and Essington Canal (2016-18)</b><br>Ecological survey completed 2014. Project progressing to work with Canal & River Trust and Walsall MBC to designate and manage as a Local Nature Reserve, including targeted improvements.  | To address significant access / quality shortfalls in natural green space   |
| <b>Provision for children and young people</b>  |  |   |
| £75,000 (potential developer contributions)   | <b>Long Knowle Open Space (2016-18)</b><br>Play area improvements  | To improve the quality of play provision  |
| <b>Amenity green space</b><br>The area has good access to amenity green space and has a surplus of amenity green space against the quantity standard. However, quality of amenity green space is variable with a number of sites of a poor quality. Prioritisation of existing provision should look to address these deficiencies in quality whilst helping to meet identified shortfalls in other typologies such as natural green space.   |  |   |
| n/k   | <b>Quality improvements to Amenity Green Space (2016-21)</b><br>Explore potential to improve quality and create habitat on low quality amenity green spaces, or if not possible consider potential for disposal e.g. Brackenwood Drive, Calver Crescent (adj fmr Wednesfield School playing fields), Cambridge Street. | To address poor quality of some amenity green spaces  |

## CITY OF WOLVERHAMPTON COUNCIL OPEN SPACE STRATEGY AND ACTION PLAN UPDATE

| Indicative Cost (funding sources)  | Project (Indicative Timing)  | Reasons why this is a priority  |
|--|--|---|
| n/k<br>(potentially: Council budget; developer contributions)                  | <b>Heath Town Estate Masterplan (2016-21)</b><br>As part of Masterplan, carry out a range of open space and public realm improvements to Heath Town Estate, including improve ball court and create a play hub on land adjoining the ball court. | To improve the quality and accessibility of amenity space and play provision across the Heath Town Estate |
| <b>Total</b>   |  |   |
| £1.3 million (where known), including £646,000 secured developer contributions |  |   |



## **APPENDIX ONE: QUALITY AND VALUE SCORING METHODOLOGY**

Site by site quality and value scoring has been carried out as a desk based exercise in partnership with the Wolverhampton City Council Parks Team and Open Space Steering Group. The scoring should be used by WCC to create a quality and value matrix for sites within the City. Quality and value scores are provided in a separate Excel database.

KKP developed specific quality and value criteria to assess sites against. To give a consistent and robust approach to scoring, workshop sessions were facilitated with Area Managers to score sites for quality. Value scoring was initially carried out by KKP and checked with WCC officers.

### **Quality and value**

Quality and value are fundamentally different and can be unrelated. For example, a high quality space may be in an inaccessible location and, thus, be of little value; while, if a rundown (poor quality) space may be the only one in an area and thus be immensely valuable. As a result, quality and value are also treated separately in terms of scoring. Each type of open space receives separate quality and value scores as follows. This will also allow application of a high and low quality/value matrix to further help determine prioritisation of investment and to identify sites that may be surplus to a particular open space typology in the future.

### ***Analysis of quality***

A desk based scoring system has been devised in order to provide sites with a quality score. The criteria used is derived from the Green Flag Award scheme (a national standard for parks and green spaces in England and Wales) and KKP's own site visit assessment pro-forma. The quality criteria used to allocate sites with a quality score are summarised in the following table.

#### **Quality criteria for open space sites (score)**

- ◀ Welcoming place e.g., safe, secure entrances that open onto busy areas with good natural surveillance.
- ◀ Information/signage e.g., visible, well located and maintained notice boards and directional sign posts.
- ◀ Provision of ancillary facilities e.g., sufficient presence of provision such as seats, benches, bins and toilets.
- ◀ Quality of ancillary facilities e.g., level of condition of ancillary provision.
- ◀ Conservation and biodiversity e.g., level of opportunities for wildlife habitats i.e. woodland areas, ponds and streams etc.
- ◀ Paths e.g., condition of pathways.
- ◀ Access for all e.g., level of access throughout the site for individuals with a disability.
- ◀ Overall maintenance and cleanliness e.g., general condition of site and features.



For the typologies of provision for children and young people, allotments and natural/semi-natural green space separate criteria are used to score the quality of sites. This is due to many of the criteria used to score general open spaces not being applicable to sites of this type. For example, it is not anticipated that biodiversity and conservation is a key component of the quality of a children's play area. Nor is it appropriate for ancillary facilities of allotments to be scored in the same way as ancillary facilities for other types of open space (i.e. parks, amenity green space). For natural green space the criteria of conservation and biodiversity has been used to establish a sites level of quality. This is as the category is the most appropriate to identify the level of wildlife opportunities and conservation status of a site. Other elements such as path and provision of ancillary facilities are often not applicable or relevant when considering a sites natural quality.

The desk based criteria to score quality of children's play areas looks at two elements. These are set out in the table below.

**Quality criteria for play provision sites (score)**

- ◀ Range of play equipment e.g., is there a wide variety of equipment which caters for different age groups.
- ◀ Quality of play equipment e.g., level of condition of the equipment found onsite.

A separate set of criteria is also used to score the quality of allotment sites. These are set out below.

**Quality criteria for allotment sites (score)**

- ◀ Water supply e.g., is there a source of water supply on site for plot holders to utilise.
- ◀ Toilet provision e.g., is toilets available onsite or off site.
- ◀ Parking availability e.g., is specific parking available for users of sites.

For allotments most sites are given a quality score with the exception of those which are outside of the Council's regular maintenance (it is assumed that these are of a high quality given their private ownership).

***Analysis of value***

Similarly to quality, a desk based scoring system, has also been created for assessing value. The more criteria a site meets, the higher the value is placed on a site. Value is defined in PPG17 guidance in relation to the following three issues:

- ◀ Context of the site i.e. its access, scarcity value and historic value.
- ◀ Level and type of use.
- ◀ The wider benefits it generates for people, biodiversity and the wider environment.

The value criteria set is initially derived from PPG17 guidance. However, this has been amended to reflect the desk based nature of the assessment. Therefore it focuses on elements that utilise GIS data available and local knowledge within WCC Parks Team. All sites within the audit have been assessed for value.



The criteria used is summarised as:

**Value criteria for open space sites (score)**

- ◀ Indices of Multiple Deprivation (IMD) Rank - sites in an area ranked as being more deprived receive a higher value mark than those sites of a lower ranking.
- ◀ Proximity of other greenspace - sites close to other sites of the same typology will score lower than sites which are the only one of their kind in the area.
- ◀ Access - site is within two minutes walk time (96m) of an identified bus stop.
- ◀ Sites with a designation - located within or adjacent to a SINIC or SLINC.
- ◀ Sites within a conservation area - located within or adjacent to an identified conservation area.
- ◀ Historic interest - site is identified as containing or being adjacent to a listed building or monument.
- ◀ Level of use - whether the site is popular and well used.
- ◀ Green Flag Award - site has achieved Green Flag Award status.
- ◀ Community interest - site has a formal group associated to it or it has a known strong community interest/ownership.
- ◀ Multi-functional benefit - site contains other open space features such as a play area or sports facility.
- ◀ Unique benefit - site offers or provides features or a role which is unique in the City such as hosting city wide events.

**Quality and value thresholds**

In order to determine whether sites are high, adequate or low quality/value (as recommended by PPG17 guidance); the results of the site assessments have been colour-coded against a baseline threshold (high being green, amber being adequate and low being red).

The primary aim of applying a threshold or standard is to identify and justify sites which should be given the highest level of protection by the planning system, those which require enhancement in some way and those which may no longer be needed (particularly when compared with its respective value score/threshold).

Quality is scored on the basis of allocating good, adequate or poor to each element assessed. For example, if a park site scores poor for all elements it can only achieve a maximum of nine points out of 27 (33%). Similarly if it scores adequate for all criteria it can only achieve a maximum of 18 points (66%); and if it scores for all criteria it can achieve 27 points (100%).

Mean scores are used as a guide to set the thresholds to identify high, adequate or low quality (as summarised in Table 1) for each typology. Thresholds for amenity green space and natural green space are set lower to better reflect their characteristics; as sites of these typologies are anticipated to have fewer features compared to park provision, for example.

Baseline thresholds to identify high/low value are usually set at 20%. However, this is adjusted for some typologies (amenity green space, provision for children, parks and natural green space) depending on the amount of criteria used to assess the value of each typology.





For example, the maximum score a park and garden site can receive for value is 52. Whereas the maximum value a play area site can attain is 15. Therefore play sites have an overall higher level of percentage scores compared to other typologies (as demonstrated by the higher mean score). This means play sites only need to score once against the criteria in order to be rated as high for value. Subsequently, in a similar way to quality, value thresholds are set for each individual typology based on the mean and lowest scores recorded.

The following table provides a summary on the quality and value thresholds applied to identify low/adequate/high scores.

*Table 1: Quality and value thresholds by typology*

| Typology                                | Quality thresholds |          |       | Value threshold |
|---|--------------------|----------|-------|-----------------|
|   | Low                | Adequate | High  |                 |
| Allotments                              | < 40%              | 40-75%   | > 75% | 20%             |
| Amenity green space                     | < 40%              | 40-75%   | > 75% | 15%             |
| Provision for children and young people | < 50%              | 50-84%   | > 84% | 35%             |
| Parks                                   | < 55%              | 55-80%   | > 80% | 15%             |
| Natural green space                     | < 35%              | 35-66%   | > 67% | 15%             |

### Scoring summary

This section describes the findings from the quality and value assessment for each typology.

The table below summarises the results of the quality assessment for open spaces in Wolverhampton.

*Table 3.3: Quality scores for all open space typologies*

| Typology                              | Maximum score | Percentage (%) |            |               | Number of sites |            |            |
|---------------------------------------|---------------|----------------|------------|---------------|-----------------|------------|------------|
|                                       |               | Lowest score   | Mean score | Highest score | Low             | Adequate   | High       |
| Allotments                            | 5             | 20%            | 54%        | 80%           | 1               | 25         | 6          |
| Amenity green space                   | 24            | 0%             | 69%        | 100%          | 21              | 127        | 51         |
| Provision for children & young people | 6             | 33%            | 91%        | 100%          | 3               | 33         | 93         |
| Parks                                 | 24            | 42%            | 81%        | 100%          | 1               | 24         | 29         |
| Natural green space                   | 3             | 0%             | 65%        | 100%          | 26              | 37         | 40         |
| <b>TOTAL</b>                          | <b>24</b>     | <b>0%</b>      | <b>-</b>   | <b>100%</b>   | <b>52</b>       | <b>247</b> | <b>219</b> |

Most sites score either adequate (48%) or high (43%) for quality with only a small proportion of all sites (10%) receiving a low quality score.

Provision for children and young people scores well compared to other typologies; with 72% of such sites scoring high for quality. Play areas generally have a good range of



equipment. The three lowest scoring sites are St Chad's Recreation Ground Play Area, Stirling Road Play Area and Laburnum Street Play Area. All are identified as having a poor range and quality of equipment.

More natural and semi natural green space sites (25%) score low for quality compared to any other typology. This reflects the generally lower mark sites receive for conservation and biodiversity such as non designated SLINC and SINC sites.

The typologies of allotments, parks, amenity green space and natural green spaces are generally all of an adequate or high quality. In particular most allotments (78%) and amenity green spaces (64%) are rated as being of an adequate quality.

The one allotment site with a low quality score is Slim Avenue Allotments. This site has no toilet provision, water supply or onsite parking. Two allotment sites do not receive a quality score. These sites, Lich Avenue and Elmdon Close, are managed by the Council but are identified as currently being closed for allotment purposes.

Oak Street is the only park site to receive a low quality score. The site scores poorly on quality of paths and access for all. The site also has low scores for ancillary facilities, information, conservation and biodiversity and its general maintenance.

## Value

The table below summarises the results of the value assessment for open spaces in Wolverhampton. All sites receive a value score.

*Table 3: Value scores for all open space typologies*

| Typology                              | Maximum score | Percentage (%) |            |               | Number of sites |            |
|---------------------------------------|---------------|----------------|------------|---------------|-----------------|------------|
|                                       |               | Lowest score   | Mean score | Highest score | Low             | High       |
| Allotments                            | 30            | 17%            | 32%        | 53%           | 2               | 30         |
| Amenity green space                   | 37            | 11%            | 21%        | 46%           | 9               | 190        |
| Provision for children & young people | 15            | 33%            | 48%        | 93%           | 1               | 128        |
| Parks                                 | 52            | 13%            | 28%        | 50%           | 1               | 53         |
| Natural green space                   | 35            | 9%             | 27%        | 51%           | 9               | 94         |
| <b>TOTAL</b>                          | <b>52</b>     | <b>9%</b>      | <b>-</b>   | <b>93%</b>    | <b>22</b>       | <b>495</b> |

The majority of sites (96%) are assessed as being of high value. Similar to the quality scores, provision for children and young people is highly valued with nearly all sites (99%) being assessed as high value. This reflects the unique benefits such sites provide to local communities, particularly for children and families. A similar very high proportion of parks (98%) also score high for value. This is due to the number of sites identified as providing a range of different and popular uses.

A higher proportion of natural green space sites (9%) score low for value compared to any other typology. This is a reflection of the number of sites that do not have a particular designation, either historic or conservation, and/or lack a multi-functional role. However,



the value these sites play in providing a visual amenity and a break from the built form remains important in a wider context.

A high value site is considered to be one that is well used by the local community, well maintained (with a balance for conservation), provides a safe environment and has features of interest; for example play equipment and landscaping. Sites that provide for a cross section of users and have a multi-functional use are considered of a higher value than those that offer limited functions and that are thought of as bland or unattractive.

### **Quality and Value Matrix**

The assessment of open space quality and value has been used to help develop the action plan by identifying sites which should be given the highest level of protection, those which should be prioritised require enhancement and those which may be surplus to requirements as open space.

Typical issues to address in order to increase quality include examples such as increasing the regularity of maintenance at the site, provision of litterbins and provision of benches. Typical issues to address in order to increase value include widening the range of open space functions it performs, raising awareness of the site and increasing community engagement in the site.

If there is a choice of spaces or facilities of equal quality (e.g. low quality), and no need to use one or part of one site to remedy a quantity or access deficiency in some other form of open space or sport and recreation provision, it will normally be sensible to consider disposing of the one with the lowest value. Similarly, if two sites are of equal value, it will normally be sensible to dispose of the one of lower quality.

Each site has been allocated a quality and value score (provided in a separate Excel spreadsheet) and in line with the criteria detailed above. This score allows each site to be placed in a high/average/low category for quality and a high/low category for value. This categorisation can then be used to inform recommended actions for each site, as detailed below:

#### **High quality/high value**

Ideally all open spaces should fall into this category and the planning system should then seek to protect them. Sites in this category should be recognised as forming a key part of the open space network.

#### **High quality/low value**

The preferred approach to an open space in this category should be to enhance its value by widening the range of open space functions it performs and / or by securing greater community involvement.

#### **Average quality/high value**

The preferred approach to an open space in this category should be to enhance quality where possible and to protect through the planning system.



**Low quality/high value**

The preferred approach to an open space in this category should be to enhance quality as a priority and to protect through the planning system.

**Average quality/low value**

The preferred approach to an open space in this category should be to enhance its value by widening the range of open space functions it performs and / or by securing greater community involvement. Quality improvements may also be necessary to achieve increased value. Sites in this category may become 'surplus to requirements' if value cannot be increased.

**Low quality/low value**

The preferred approach to an open space in this category should be to seriously consider if there is any potential to enhance both value and quality. If this is not practical or viable, the open space may then be considered 'surplus to requirements'. If the site is not suitable for any purpose other than open space in the long term, value and quality improvements may still need to be considered.



**APPENDIX TWO: OPEN SPACE STANDARDS REVIEW**

**WOLVERHAMPTON CITY COUNCIL  
OPEN SPACE STANDARDS REVIEW  
JANUARY 2012**

# WOLVERHAMPTON CITY COUNCIL

## OSANA STANDARDS REVIEW

---

### INTRODUCTION

Wolverhampton City Council (WCC) undertook an Open Space Audit and Needs Assessment (OSANA) in 2007-8 as part of a Planning Policy Guidance 17 (PPG17) assessment of open spaces, sport and recreation facilities in the City. Knight, Kavanagh & Page (KKP) has been appointed by the Council to produce a strategy and action plan for parks and open spaces in Wolverhampton up to 2026. As part of this (Stage 1), it is considered that there is a need and opportunity to re-appraise the provision standards recommended in OSANA, particularly given the time that has elapsed since it was completed, and in order to robustly develop its recommendations into a phased deliverable action plan.

This document sets out the proposed open space standards and the rationale behind them. The subsequent Open Space Strategy will prioritise the application of the standards in order to be deliverable within the current economic climate.

### OSANA

The 2008 OSANA report provides an audit of all recreational open space within the City by type of use. It recommends local provision standards up to 2021 and makes recommendations based on the framework of open space provision, with the view to improving the quality, quantity and access of all types of recreational open space for the future. The study uses the five step methodology set out in PPG17 Companion Guide for undertaking an open space local needs assessment. In general, OSANA covers all the types or typologies set out in PPG17 guidance:

- Allotments
- Amenity green space
- Cemeteries and churchyards
- Green corridors
- Natural green space
- Parks (Town/District, Neighbourhood)
- Provision for children
- Provision for young people
- Outdoor sports facilities

For the purposes of the 2008 OSANA, civic spaces were included within the typology of green corridors due to their often linear nature.

#### ***Identifying local needs***

The previous OSANA report comprised a series of consultations to identify local needs. This included meeting with council officers and external partners as well consulting with members of the general public. A number of methods were used in order to gather individuals' views towards open space provision. For general public consultation the following took place:

- ◀ *Residents' consultation* – this involved an on-street survey in five different locations across the City. A total of 800 responses were generated with results used within the individual typology sections.

## WOLVERHAMPTON CITY COUNCIL OSANA STANDARDS REVIEW

---

- ◀ *Neighbourhood drop-in sessions* – five sessions were held throughout the City, enabling residents to voice their views on open space, sport and recreation facilities.
- ◀ *Workshops and focus groups* – these were held with a number of groups such as children and young people, over 50's forum, sports clubs and friends of groups.
- ◀ *Internet survey for young people* – this was a web-based questionnaire aimed at school children and sent to all schools within in the City. A total of 774 responses were received.
- ◀ *Other* – dedicated email, text and freepost addresses were created for anyone wishing to respond separately. These were advertised in local papers.

The access standards (i.e. maximum distances) set out in OSANA are (in the main) derived from the findings of the local needs assessment. Given the evidence to support them, we therefore recommend that these remain unchanged.

### **Audit**

Following scrutiny, 1,055 sites were included within the audit, covering circa 1,084 hectares of recreational open space, including school playing fields. Golf courses and 16 sites located just outside the Wolverhampton City boundary were excluded from the analysis.

Several assumptions were made when the open space was identified and audited for the 2008 OSANA. These included:

- ◀ No application of a minimum size threshold. Therefore all publically accessible open space provision was audited.
- ◀ Open spaces were categorised using PPG17 typologies.
- ◀ Provision for young people included skate parks, BMX tracks, MUGAs, teenage shelters and informal kick-about areas.
- ◀ Provision for children included children's play areas and adventure playgrounds that are freely accessible.
- ◀ Parks provision was grouped into two classifications (i.e. town/district, neighbourhood (including newly created pocket).

As part of the process site assessments were undertaken for 613 (71%) open space sites. A standardised pro forma was used to gather the information for each site. The site assessment sheet looked at elements related to:

- ◀ Quality
- ◀ Site access
- ◀ Wider benefits

More details on the site assessment methodology can be viewed in the quality section detailed in the OSANA Review Report submitted in December 2011. The subsequent quality standards developed from the audit and consultation have been retained as there has been no further evidence to suggest amending them at this stage.

## WOLVERHAMPTON CITY COUNCIL OSANA STANDARDS REVIEW

---

The following quantity standards were originally derived from the audit:

| Typology                   | OSANA standard |
|----------------------------|----------------|
| Parks                      | 0.87           |
| Natural green space        | 1.50           |
| Provision for children     | 0.05           |
| Provision for young people | 0.05           |
| Amenity green space        | 0.62           |
| Allotments                 | 0.15           |
| Civic spaces               | Not set        |
| Outdoor sports facilities  | 1.50           |

The quantity standards have now been amended and updated to take account of changes to the audit as detailed in subsequent sections of this report.



### QUALITY STANDARDS

The quality standards are provided on a typology basis and present a holistic approach to improving quality across the City. It is likely that more specific standards will be set within the Strategy to further help prioritise the need for investment, together with design guidelines to ensure that improvements are made to the highest possible standard.

#### **Parks**

*“A welcoming, clean and litter free site providing a one-stop community facility which is accessible to all and has a range of facilities and other types of open space within it. District Parks should be attractive, well designed and maintained, providing well-kept grass, flowers and trees, adequate lighting and other appropriate safety features, as well as suitable ancillary accommodation (including seating, toilets, litter bins and play facilities). Sites should be safe and secure and easily accessible.*

*Where appropriate, the Park Ranger scheme should be implemented to enhance the quality of the environment and facilitate community interaction. Encouraging community involvement through organised events should help to increase usage and activities. Sites should promote the conservation of wildlife and the built heritage and provide links to the surrounding green infrastructure”*

*“Striving to achieve a national standard for quality, all Neighbourhood Parks should be a facility serving the immediate needs of local people for active recreation. They should provide a welcoming, clean and litter free environment. Maintenance should focus on providing well-kept grass, flowers and trees and encourage wildlife to flourish with the use of varied vegetation through appropriate management. Park Rangers should work with the community and other organisations to provide a hub of interest, activities and local events as well as establishing a safe network of local open spaces. Good quality and appropriate ancillary facilities (toilets, litter-bins, dog-bins and benches) should be provided to facilitate the needs of users and encourage greater use.”*

#### **Natural and semi natural green space**

*“A clean and litter free site with clear and obvious pathways that provide opportunities to link other open spaces together and where appropriate link in to the outlying countryside. Sites should encourage wildlife conservation, biodiversity and environmental awareness, maximised through appropriate natural features. Litter-bins, dog-bins, benches and picnic areas should be provided where possible and there should be a clear focus on balancing recreational and wildlife needs, whilst ensuring public access to all. Increased community involvement through management, maintenance and promotion of these sites should be encouraged where possible. ”*

#### **Provision for young people**

*‘A well designed, high quality site that provides a meeting place for young people, encompassing the needs of all users with varied formal and informal equipment / space. The site should be located in a safe environment that is accessible to all, without compromising neighbouring land users. The focus should be on providing a well-maintained, clean and litter free area with appropriate lighting and shelter, promoting a sense of community ownership.’*

### **Provision for children**

*“A well designed, well-maintained, clean site of sufficient size to provide imaginative formal equipment and / or an enriched play environment in a safe and convenient location. Equipped play spaces should be fun and exciting and should have clear boundaries with dog free areas and include appropriate ancillary facilities such as seating, litter-bins and toilets in the locality of larger sites. Sites should also comply with appropriate national guidelines for design and safety and safeguard the amenity of neighbouring land users. The site should also be accessible to all.”*

### **Outdoor sport facilities**

*‘A well-planned, clean and litter free sports facility site that sits in harmony with its surroundings. The site should be well maintained to an appropriate match play standard, with good grass coverage and well-drained quality surfaces. Appropriate ancillary accommodation should be provided at sites with consideration given to providing toilets, changing rooms and car parking. Community-use synthetic turf pitches should be floodlit to comply with quality standards and maximise usage. Meeting places should be provided for both formal and informal sports pitch sites inclusive of sheltered areas and benches, encouraging participation and access for all. The site should be managed appropriately to ensure community safety and provide a local amenity that is close to people’s homes, contributing to the health agenda’.*

### **Amenity green space**

*“A clean and well-maintained green space site that is accessible to all. Sites should have appropriate ancillary furniture (litter-bins, etc.), and pathways and landscaping designed to provide a safe secure and site with a spacious outlook that enhances the appearance of the local environment and provides a safe area for young people to meet. Larger sites should be suitable for informal play opportunities and should be enhanced to encourage the site to become a community focus, while smaller sites should at the least provide an important visual amenity function.”*

### **Allotments**

*‘A clean and well-kept secure site that encourages sustainable development, bio-diversity, healthy living and education objectives, with appropriate ancillary facilities (e.g. provision of water and toilets) to meet local needs, clearly marked pathways and good quality soils. The site should be spacious, providing appropriate access for all and clear boundaries.’*

### **Cemeteries and churchyards**

*A clean and well-maintained site providing long-term burial capacity (where appropriate), an area of quiet contemplation and a sanctuary for wildlife. Sites should have clear pathways and varied vegetation and landscaping and provide appropriate ancillary accommodation (e.g. facilities for flowers, litter-bins and seating).*

## **Green corridors**

*Linear open spaces and canals should be clean and litter-free, safe and convenient corridors with clear pathways, linking major residential areas, open spaces, urban centres, leisure facilities and employment areas, that promote sustainable methods of transport. Appropriate ancillary facilities such as litter and dog bins, seating in appropriate places and signage to and within the sites should be provided to encourage access for all. The corridor should also seek to encourage biodiversity and wildlife habitats, enabling the movement of both wildlife and people between open spaces, linking in specifically with natural areas of open space.”*

## **Civic spaces**

*“A clean, well-maintained and safe civic space that is accessible to all. Sites should have appropriate infrastructure for holding community events (i.e. electric points and access for vehicles), ancillary furniture (i.e. seats and bins, etc.), and landscaping designed to enhance the appearance of the predominately hard surface area.”*

### QUANTITY STANDARDS

The quantity standards are based on the amount of current provision per 1,000 head of population. A quantity standard has been set for each typology with the exception of green corridors and cemeteries. This is in line with the guidance set out within PPG17. The guidance recommends no quantity standard is set for green corridors or cemeteries respectively due to their often linear form and requirement to be driven by burial need.

Standards are produced for individual typologies as opposed to grouping similar typologies together. This was done in order to recognise the different values placed on each typology identified during site visits and inferred by residents during consultation. However, on a local level some typologies such as amenity green space and parks will be viewed in context of one another and are recognised in some instances as fulfilling a similar function.

One standard is provided for all parks in Wolverhampton. This helps to simplify the setting of standards as opposed to having an individual standard for each sub-category of parks. This provides a greater level of flexibility in seeking developer contributions across the City for all forms of parks provision.

A citywide standard is provided in order to allow a greater level of flexibility in the setting of standards for each typology. By doing this, factors such as a residents ability to travel across the City to access/use certain types of sites can be recognised. This flexibility would be reduced if standards were provided on a catchment area basis.

Site size thresholds have been applied to amenity green space and natural green space. PPG17 guidance recommends that sites smaller than 0.2 hectares in total size, are generally of less recreation value and, as such, can be discounted from the quantity standards. The impact of reducing the total number of sites is most significant in the amenity green space typology; 250 sites, equating to circa 26 hectares has now been removed.

In addition to applying thresholds, there was also an opportunity to reduce the total hectares of provision classified as provision for young people. The typology previously included informal kick-about areas, which tended to be large sized areas within other typologies (e.g. amenity green space or parks). A process of applying a set universal site size of 0.045 hectares to all sites identified as an informal grass kick-about area (21) has been undertaken. The five additional sites initially identified as provision for young people have been re-classified as the same designation as their adjoining or surrounding typology.

The following table summarises the specific actions applied for each typology:

| Typology            | Action  |
|---------------------|---|
| Parks               | <ul style="list-style-type: none"> <li>◆ Retained sub categories of district, neighbourhood and pocket. Prioritise parks for investment within SPD. The action plan should also prioritise on this basis.</li> </ul>  |
| Natural green space | <ul style="list-style-type: none"> <li>◆ Applied a site size threshold of 0.2 hectares and where possible merged sites within close proximity of each other. This reduced the number of sites by 22 and the total hectares by approx 2.8 ha.</li> <li>◆ Sites perceived to be of high value to the community have been retained.</li> </ul> |

# WOLVERHAMPTON CITY COUNCIL

## OSANA STANDARDS REVIEW

| Typology                   | Action   |
|----------------------------|--|
| Provision for children     | <ul style="list-style-type: none"> <li>◀ Explored areas of shortfall via catchment mapping to ensure robustness.</li> <li>◀ Applied a set universal standard (0.1 ha) for the three adventure playground sites.</li> <li>◀ Removed four sites identified as having closed.</li> </ul>  |
| Provision for young people | <ul style="list-style-type: none"> <li>◀ Young people's facilities consisted of skate parks, BMX tracks, informal kick-about areas, Multi-Use-Games-Areas (MUGAs) and teenage shelters. Applied a set universal standard (0.045 ha) for informal kick-about areas to reduce the significant contribution these sites made to the overall hectares. Five sites counted within amenity green space/parks provision in order to recognise value but not for their size to add to overall provision for young people. This reduced the total hectareage by approx 2 ha.</li> </ul>   |
| Amenity green space        | <ul style="list-style-type: none"> <li>◀ Applied a site size threshold of 0.2 hectares and where possible merged sites within close proximity of each other. This reduced the number of sites by approx 230 (over 20 ha).</li> <li>◀ Sites perceived to be of high value to the community have been retained.</li> <li>◀ Applied a 10 minute access standard (so that it is consistent with the street survey findings). This increases the catchment of existing sites and the number of people living within a 10 minute walk of an amenity green space (see maps).</li> </ul> |
| Allotments                 | <ul style="list-style-type: none"> <li>◀ Unable to recalculate quantity standards taking account of demand by using waiting list figures as the data is considered unreliable.</li> </ul>  |
| Cemeteries & churchyards   | <ul style="list-style-type: none"> <li>◀ No action required. Should be led by the burial strategy.</li> </ul>  |
| Green corridors            | <ul style="list-style-type: none"> <li>◀ Removed hard surface civic spaces from calculation of standards and provided a quantity standard for civic spaces.</li> </ul>   |

In order to address the issues raised and to ensure the robustness of the standards, and in particular the open space quantity standards, we have revised the standards to ensure that they more accurately reflect current local needs and are achievable and sustainable.

The quantity standards provide a guideline as to how much open space, sport and recreation provision per 1,000 people is required in the City to meet current demand.

| Typology            | OSANA 2008 standard (ha per 1,000 popn)       | Proposed quantity standard (ha per 1,000 popn) | Explanation of change   |
|---------------------|---|--|---|
| Parks               | 0.87 (District Parks and Neighbourhood Parks) | 0.99   | Increase due to reclassification of some sites previously in different typologies, including pocket parks and playing pitches.    |
| Natural green space | 1.50 (Actual: 1.47)                           | 1.33   | Decrease due to removal of small sites and setting standard at current levels following a reassessment of OSANA survey responses. |

## WOLVERHAMPTON CITY COUNCIL OSANA STANDARDS REVIEW

| Typology                   | OSANA 2008 standard (ha per 1,000 popn)  | Proposed quantity standard (ha per 1,000 popn)                                       | Explanation of change  |
|----------------------------|--|--|--|
| Provision for children     | 0.05<br>(Actual: 0.027)  | 0.026  | Decrease due to redrawing of site boundaries and setting standard at current levels following a reassessment of OSANA survey responses.  |
| Provision for young people | 0.05<br>(Actual: 0.03)   | 0.018  | Decrease due to redrawing of site boundaries to more realistically reflect area available for play, and setting standard at current levels following a reassessment of OSANA survey responses. |
| Amenity green space        | 0.62   | 0.56   | Decrease due to removal of small sites and reclassification of some sites as Parks   |
| Allotments                 | 0.15   | 0.15   | Remained same  |
| Civic spaces               | Not set  | 0.005  | Newly created standard   |
| Outdoor sports facilities  | 1.50<br>(Actual: 1.44)<br>0.53 of which should be pitch area<br>(Actual: 0.54) | 1.35<br><br>0.74 of which should be pitches available for community use <sup>4</sup> | Decrease due to reclassification of some playing pitches as part of Parks  |
| <b>Total</b>               | <b>4.74</b>  | <b>4.43</b>  | <b>Decrease due to reduction in total amount of open space in individual typologies and setting standards at current levels following a reassessment of OSANA survey responses.</b>            |

The proposed quantity standards are generally lower or have remained the same compared to the current OSANA standards for all typologies, with the exception of parks, which has increased due to reclassification of some sites previously in amenity green space and outdoor sports facility typologies.

<sup>4</sup> From Playing Pitch Strategy (population figures based on 2001 Census data as it is only dataset with breakdowns for gender and age groups required. Also incorporates latent demand)

# WOLVERHAMPTON CITY COUNCIL

## OSANA STANDARDS REVIEW

### Identifying future need

We would advocate use of the latest ONS population estimates to provide an indication of future trends by age and gender for the next 25 years. ONS based estimates supplied by the Council indicate a population increase of 6% between 2010 and 2026, resulting in a future population total of 253,700. In light of Council population estimates, the population percentage increase is applied to the citywide standard for each typology below to identify how much provision is required to service the future population.

The 'Total new provision 2026' column substantiates the actual deficiency in terms of the difference in hectares between current provision and future provision in 2026 (based on future population figures and using the standards shown below). The total requirement is an additional 62.24 ha if standards are to be met by 2026.

### Parks

| Current population (ONS 2010) | Total provision (ha) | Standard based on current demand | Future population | Total new provision 2026 (ha) |
|-------------------------------|----------------------|----------------------------------|-------------------|-------------------------------|
| 239,354                       | 238.09               | 0.99                             | 253,700           | 13.07                         |

### Natural and semi/natural green space

| Current population (ONS 2010) | Total provision (ha) | Standard based on current demand | Future population | Total new provision 2026 (ha) |
|-------------------------------|----------------------|----------------------------------|-------------------|-------------------------------|
| 239,354                       | 319.58               | 1.33                             | 253,700           | 17.84                         |

### Provision for children

| Current population (ONS 2010) | Total provision (ha) | Standard based on current demand | Future population | Total new provision 2026 (ha) |
|-------------------------------|----------------------|----------------------------------|-------------------|-------------------------------|
| 239,354                       | 6.23                 | 0.026                            | 253,700           | 0.36                          |

### Provision for young people

| Current population (ONS 2010) | Total provision (ha) | Standard based on current demand | Future population | Total new provision 2026 (ha) |
|-------------------------------|----------------------|----------------------------------|-------------------|-------------------------------|
| 239,354                       | 4.33                 | 0.018                            | 253,700           | 0.23                          |

### Amenity green space

| Current population (ONS 2010) | Total provision (ha) | Standard based on current demand | Future population | Total new provision 2026 (ha) |
|-------------------------------|----------------------|----------------------------------|-------------------|-------------------------------|
| 239,354                       | 134.11               | 0.56                             | 253,700           | 7.96                          |

## WOLVERHAMPTON CITY COUNCIL OSANA STANDARDS REVIEW

### *Allotments*

| Current population (ONS 2010) | Total provision (ha) | Standard based on current demand | Future population | Total new provision 2026 (ha) |
|-------------------------------|----------------------|----------------------------------|-------------------|-------------------------------|
| 239,354                       | 35.43                | 0.15                             | 253,700           | 2.62                          |

### *Civic spaces*

| Current population (ONS 2010) | Total provision (ha) | Standard based on current demand | Future population | Total new provision 2026 (ha) |
|-------------------------------|----------------------|----------------------------------|-------------------|-------------------------------|
| 239,354                       | 1.25                 | 0.005                            | 253,700           | 0.02                          |

### *Outdoor sports facilities*

| Current population (ONS 2010) | Total provision (ha) | Standard based on current demand | Future population | Total new provision 2026 (ha) |
|-------------------------------|----------------------|----------------------------------|-------------------|-------------------------------|
| 239,354                       | 322.35               | 1.35                             | 253,700           | 20.14                         |

Total hectares of provision for the typologies of Cemeteries & Churchyards and Green Corridors are set out in the appendix. Totals are not provided above as no Standard is set for these open space typologies as explained earlier.



# WOLVERHAMPTON CITY COUNCIL

## OSANA STANDARDS REVIEW

---

### ACCESS STANDARDS

Access standards are effectively the distance thresholds that typical users can reasonably be expected to travel to each typology using different modes of transport. Catchment areas are based on them and are a tool to identifying communities currently served/not served by existing provision. An access standard has been set for each typology with the exception of green corridors and cemeteries, as recommended by PPG17 guidance.

The access standards (i.e. maximum distances) set out in the OSANA are (in the main) derived from the findings of the local needs assessment. Given the evidence to support them, we therefore recommend that these predominantly remain unchanged. However, the challenging 5 minute walk time standard set for amenity green space has been increased to a 10 minute walk time standard, in accordance with survey results.

| Typology                   | Access standard  |
|----------------------------|--|
| Parks                      | District - 20 minute walk<br>Neighbourhood - 10 minute walk<br>Pocket – 10 minute walk |
| Natural green space        | 15 minute walk   |
| Provision for children     | 10 minute walk   |
| Provision for young people | 20 minute walk   |
| Amenity green space        | 10 minute walk   |
| Allotments                 | 15 minute walk   |
| Outdoor sports facilities  | 15 minute walk<br>20 minute drive for STP and golf courses                             |

# WOLVERHAMPTON CITY COUNCIL OPEN SPACE STRATEGY AND ACTION PLAN

## APPENDICES

### Total figures by Analysis Area

| Analysis area              | Current populat'n (2010) | Total open space (ha) | Parks           | Natural         | Provision for children | Provision for young people | Amenity         | Allotments     | Civic space   | Outdoor sports (w/o golf) | Cemeteries and Church yards | Green Corridor |
|----------------------------|--------------------------|-----------------------|-----------------|-----------------|------------------------|----------------------------|-----------------|----------------|---------------|---------------------------|-----------------------------|----------------|
| <i>Bilston</i>             | 41,587                   | 245.453               | 41.1388         | 120.3472        | 1.1817                 | 1.1573                     | 27.2615         | 0.6285         | -             | 42.7724                   | 10.0992                     | 0.8663         |
| <i>Central &amp; South</i> | 63,845                   | 250.269               | 56.0546         | 75.7790         | 1.7891                 | 0.7721                     | 26.6701         | 10.1914        | 1.0331        | 70.0409                   | 7.9386                      | -              |
| <i>North</i>               | 37,278                   | 223.207               | 56.2310         | 48.0043         | 1.0690                 | 0.5738                     | 26.8847         | 5.0421         | 0.2150        | 68.9148                   | 15.0213                     | 1.2506         |
| <i>Tettenhall</i>          | 50,334                   | 234.153               | 41.2808         | 47.8182         | 1.0748                 | 0.3000                     | 22.3207         | 14.5526        | -             | 80.8765                   | 25.9295                     | -              |
| <i>Wednesfield</i>         | 46,310                   | 176.240               | 43.3825         | 27.6369         | 1.1190                 | 1.5290                     | 30.9732         | 5.0166         | -             | 59.7461                   | 3.8362                      | 3.0007         |
| <b>TOTAL</b>               | <b>239,354</b>           | <b>1129.322</b>       | <b>238.0877</b> | <b>319.5856</b> | <b>6.2336</b>          | <b>4.3322</b>              | <b>134.1102</b> | <b>35.4312</b> | <b>1.2481</b> | <b>322.3508</b>           | <b>62.8248</b>              | <b>5.1176</b>  |

### Breakdown of Standards by Analysis Area (below/above)

|                            | Current population (2010) | Parks       |       | Natural     |       | Provision for children |        | Provision for young people |        | Amenity     |       | Allotments    |        | Civic space  |       | Outdoor sports (w/o golf) |       |
|----------------------------|---------------------------|-------------|-------|-------------|-------|------------------------|--------|----------------------------|--------|-------------|-------|---------------|--------|--------------|-------|---------------------------|-------|
|                            |                           | 0.99        | 0.00  | 1.33        | 1.33  | 0.026                  | 0.002  | 0.018                      | 0.018  | 0.56        | 0.10  | 0.15          | -0.135 | 0.005        | 0.011 | 1.35                      | 1.35  |
| <i>Bilston</i>             | 41,587                    | 0.99        | 0.00  | 2.89        | 1.56  | 0.028                  | 0.002  | 0.028                      | 0.010  | 0.66        | 0.10  | 0.015         | -0.135 | -            | -     | 1.03                      | -0.35 |
| <i>Central &amp; South</i> | 63,845                    | 0.88        | -0.11 | 1.19        | -0.14 | 0.028                  | 0.002  | 0.012                      | -0.006 | 0.42        | -0.14 | 0.159         | 0.009  | 0.016        | 0.011 | 1.10                      | -0.25 |
| <i>North</i>               | 37,278                    | 1.40        | 0.41  | 1.29        | -0.04 | 0.029                  | 0.003  | 0.016                      | -0.002 | 0.72        | 0.16  | 0.135         | -0.015 | 0.006        | 0.001 | 1.85                      | 0.50  |
| <i>Tettenhall</i>          | 50,334                    | 0.82        | -0.17 | 0.95        | -0.38 | 0.021                  | -0.005 | 0.006                      | -0.012 | 0.44        | -0.12 | 0.289         | 0.139  | -            | -     | 1.61                      | 0.26  |
| <i>Wednesfield</i>         | 46,310                    | 0.94        | -0.05 | 0.60        | -0.73 | 0.024                  | -0.002 | 0.033                      | 0.015  | 0.67        | 0.11  | 0.108         | -0.042 | -            | -     | 1.29                      | -0.06 |
| <b>TOTAL</b>               | <b>239,354</b>            | <b>0.08</b> |       | <b>0.27</b> |       | <b>0.00</b>            |        | <b>0.005</b>               |        | <b>0.11</b> |       | <b>-0.044</b> |        | <b>0.012</b> |       | <b>0.10</b>               |       |